

Fig. 1

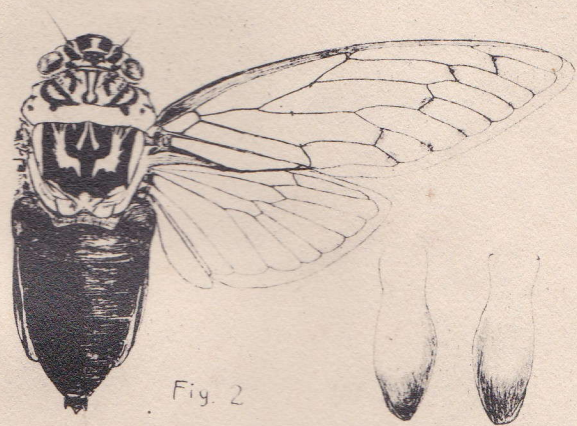


Fig. 2

2a



Fig. 4



Fig. 3

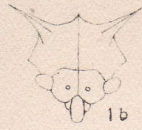
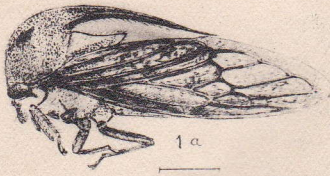


Fig. 1



Fig. 2

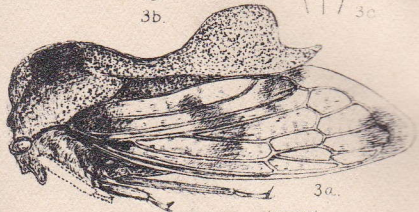


Fig. 3

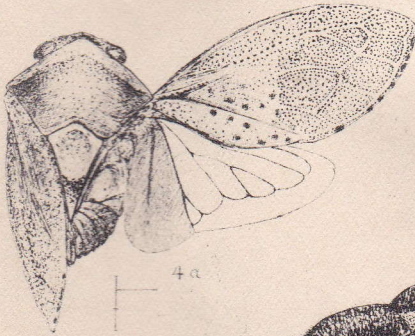


Fig. 4



Fig. 5

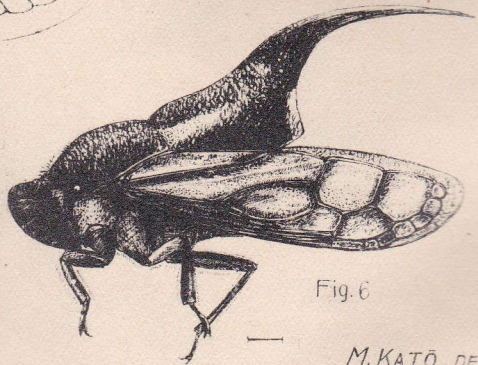


Fig. 6

M. KATŌ DEL.

日本産同翅亞目の新屬及び新種の記載

加藤正世

Descriptions of one new genus and some new species
of the Japanese Rhynchota-Homoptera.

By Masayo Kato.

數種の本邦産(主として臺灣)同翅亞目昆蟲の一新屬及び若干の新種を記載す。Type は總て著者の所藏に關するものなり。

Family **CICADIDAE** 蟬科Genus **PLATYLOMIA** Stal. タカサゴゼミ屬**Platylomia matsumurai** sp. nov. ホウライゼミ

(Pl. I. Figs. 2, 2a.)

Head and thorax above dull ochraceous; eyes shiny brown, ocelli pale glassy scarlet; head with several black spots as follows: a spot on area of ocelli, a broad oblique spot at inner margin of each eye, a large spot on lateral area of front and very small ones on lateral sides of vertex which are closing to eyes; pronotum with two central longitudinal narrow stripes which are including !-shaped ochraceous spot, three oblique lines(almost situated on furrows) and three small spots on lateral posterior area; mesonotum with three black markings on disk as shown in figure, cruciform elevation dull ochraceous, posterior margin narrowly black; abdomen wholly black, silverly pubescent, a very small spot on posterior margin of first segment and each lateral area of third and fourth segments ochraceous, tegmina and wings hyaline,

tegmina with venation fuscous, costal membrane dull olivaceous, each transverse vein and apices of second, third, fourth, fifth, sixth and seventh longitudinal veins with fuscous spots; body beneath dull ochraceous, slightly olivaceous; a broad fascia between eyes (excepting on front), a great part on genae and labrum and a Y-shaped stripe and many transverse narrow lines on front, black; legs yellowish olivaceous, apical spots on femora and first and intermediate tarsi black; opercula very long, reaching penultimate abdominal segment, convex, margins narrowly upturned, pale fuscous, apices broadly black; abdomen beneath dull fuscous, apex black.

Length excl. tegm. 48m. Exp. tegm. 130mm.

Hab. Formosa : Mt. Kappan (Sept.).

Genus **MEIMUNA** Dist. ツクツク屬

Meimuna bonin-insulana, sp. nov. ^{ヲガサハラ} ~~オホシマ~~ ツクツク

(Pl. I. Figs. 1, 1a.)

Head and thorax above olivaceous; head with area of ocelli, most part in front of eyes and base of front, black; pronotum with a central black-bordered !-shaped ochraceous stripe; a short spot on disk, furrows, lateral posterior margin and two obscure spots on lateral posterior angle, black; mesonotum with almost five irregular black markings as shown in figure, cruciform elevation olivaceous; abdomen dark brownish, first, second and third segments somewhat palely shaded, tympanal coverings olivaceous, last segment powdered with white; body beneath very pale olivaceous, powdered with white; between eyes (except on front) broadly black, central longitudinal stripe on front including apical yellowish spot and many narrow transverse lines on each side brownish; legs

almost wanting fasciae, tibiae pale brownish; opercula large, convex, inner margins slightly arched, outer margins very slightly sinuated and straightly obliquely truncated on about apical 1/3 of its length; apices subacutely pointed, very pale ochraceous, powdered with white; abdomen beneath pale brownish, semiopaque, somewhat powdered with white; tegmina and wings hyaline, veins pale brownish costal membrane olivaceous, first and second transverse veins with fuscous spots.

Length excl. tegm. 31mm. Exp. tegm. 90mm.

Hab. Bonin Island.

Meimuna amamioshimana, sp. nov. オホシマツクツク

(Pl. I. Figs. 3, 3a)

♀. Head and thorax above dull ochraceous; head with an apical spot (including a small ochraceous spot) and several transverse striae on front, area of ocelli, a spot near eyes, a very small spot between eye and posterior ocellus, and a broad oblique spot in front of eyes, black; pronotum with disk pale brownish, central longitudinal fasciae which are combined on posteriorly and divergent anteriorly, and three spots on lateral posterior area, black; mesonotum with irregular black spots as shown in figure, cruciform elevation ochraceous; abdomen black, posterior segmental margins irregularly dull ochraceous, face, thorax and abdomen beneath pale dull ochraceous; face with central longitudinal stripe (including small ochraceous apical spot) and many narrow transverse striae on front, a broad spot near eyes, large area of gena and clypeus (excluding central ochraceous carination), fuscous; rostrum scarcely reaching posterior coxae, apices of anterior femora, and tibiae and tarsi fuscous; tegmina and wings hyaline, veins pale brownish, first and second transverse veins with fuscous

spots, the second transverse vein much oblique.

Length excl. tegm. 30 mm. (to tip of ovipositor). Exp. tegm. 88mm.

Hab. Amami-Oshima, (July)

Genus **MOGANNIA** Am. Serv. クサゼミ屬

Mogannia subfusca, sp. nov. ツマキクサゼミ

(Pl. I. Fig. 4)

♀. Head, pronotum and mesonotum above dull fuscous; head with a large dull yellowish spot on anterior marginal area; antennae stramineous, basal joint fuscous; eyes dark brown, ocelli dull yellowish; pronotum with central longitudinal stripe, lateral marginal areas and furrows dull yellowish; mesonotum with four obconical spots, the central two shortest (these markings very obscure), cruciform elevation pale stramineous; abdomen fuscous, somewhat pale yellowish, last two segments and anal appendage pale yellowish; tegmina and wings hyaline, veins of tegmina pale stramineous on basal halves, others fuscous, on basal half veins narrowly bordered with fuscous, wings with five apical areas; body beneath and legs stramineous; face, apices of tibiae (anterior tibiae and tarsi wholly) and tarsi brownish.

Length excl. tegm. 16 mm. Exp. tegm. 39 mm.

Hab. Taihoku (May).

Family **MEMBRACIDAE** 角蟬科

Genus **LEPTOCENTRUS** Stal. タカネツノゼミ屬

Leptocentrus formosanus, sp. nov. タカネツノゼミ

(Pl. II. Figs. 1, a, b.)

♀. Head and pronotum black; anterior margin and central

area of scutellum and sternal lateral margins thickly covered with creamy white pilose; body beneath and legs black, castaneous brown on tibiae and tarsi; tegmina smoky hyaline, apical halves darker, basal areas opaque, veins brown to dark brown.

Head and pronotum thickly coarsely punctate, thickly golden pubescent; head between eyes almost as broad as long including clypeus; clypeus long, narrow, about twice as long as wide, and as long as vertex, apex rounded; eyes porrect, transverse, yellowish brown; ocelli brownish glassy, farther from each other than from eyes, situated on a line drawn through centers of eyes; genae and labrum thickly covered with creamy-white pilose; antennae brownish; lateral pronotal process short, acutely spined, tricarinate, about twice as long as base, slightly recurved posteriorly, posterior process very slender, apex very acutely spined, tricarinate, slightly raised above on scutellum, apex touching with interior angles of tegmina; scutellum almost as long as broad, slightly narrowed posteriorly, apex slightly raised above and strongly sinuated, coarsely punctate and finely greyish pilose; legs thickly covered with greyish pubescent; tegmina narrow, apices subacute; basal opaque parts coarsely punctate, veins sparsely haired.

Length incl. tegm. 8 mm.; breadth bet. supra humerals 4 mm.

Hab. Formosa: Arisan, Nōkōzan (May-June).

Genus **EUPANTALEON** Gen. nov. コブツノゼミ屬

Type *E. bufo* sp. nov.

Clypeus extending well below the margin of head; pronotum robust, central longitudinal carina prominent; posterior process short, heavy, the dorsal marginal line gradually elevated, suddenly & vertically truncated near apex and narrowed toward apex, apex slightly raised above and slightly passing interior angles of

tegmina; tegmina with four, wings with three, apical areas.

Eupantaleon bufo sp. nov. コブツノゼミ
(Pl. II, Figs. 3, a, b, c)

Black; head and pronotum coarsely punctate, sparsely greyish fine pilose; head between eyes as broad as long including clypeus; clypeus as broad as long and as long as vertex; eyes somewhat porrect, subtransverse, pale brownish, ocelli pale brownish glassy, placed slightly nearer to eyes than to each other, situated slightly above on a line drawn through centers of eyes; humeral angles and dorsal carination very prominent, anterior margin of metopidium deeply indented on each side of central carina; suprahumeral short and broad, apices rounded, dentate posteriorly, somewhat directed upward; posterior process short, lateral margins strongly sinuated on scutellum, apical half humped and suddenly truncate, apex forming a short slightly upwardly directed spine.

Body beneath dark brownish, rostrum and legs castaneous, rostrum reaching posterior coxae.

Tegmina hyaline, base, central area transversely fuscous, apex with irregular fuscous opaque spots, veins fuscous to pale yellowish.

Length incl. tegm. $5\frac{1}{2}$ mm. Breadth bet. supra humerals 2 mm.

Hab. Formosa: Koshun (June)

Genus **MAURYA** Dist. トビイロツノゼミ屬

Maurya angulatus Funkh. タイワントビイロツノゼミ
(Pl. II, Figs. 2.)

Maurya angulatus, Funkh. Bull. Brook. Ent. Soc. XVI; 2, p. 48, Figs. 9, 10 (1921); id. Gen. Cat. Hem. I; Memb. p. 440 (1927).

Hab. Formosa; Hori, Shinsuiyei; China: Kiautchau.

Family **MACHAEROTIDAE** 刺沫吹科Genus **MACHAEROTA** Burm. トゲアハフキ屬**Machaerota formosana** sp. nov. トゲアハフキ

(Pl. II, Figs. 6.)

Black; head, pronotum and basal half of scutellar process finely punctured; scutellar process shining black on apical half, with an elongate spot on the side of basal part, on the posterior margin creamy white, strongly convex on the basal half, laterally depressed on the distal part, spined on apex, reaching tegminal apices; tegmina hyaline, narrow, apices slightly rounded, margined with fuscous, veins black to brown, very prominent, with eight marginal cells; first and second apical cells much larger; body beneath and legs also black (bases of posterior legs fuscous), thorax beneath greyish pilose.

Length incl. tegm. 5 mm.

Hab. Formosa: Shishito near Hori (March.)

Type 1 ♂.

Host. *Lithocarpus* sp. (Fam. *Cupuliferae*.)Genus **MAKIPTYELUS** Mats. マキアハフキ屬**Makiptyelus fasciatus**, sp. nov. アリサンマキアハフキ

(Pl. II, Figs. a, a, b.)

Pronotum and scutellum above dull olivaceous; head small, dull ochraceous, anterior margin convexly rounded, between eyes as twice as long, vertex short, obliquely inclined anteriorly, shorter than front, each side of ocellus largely hollowed, posterior margin subangularly sinuated and somewhat raised upward; eyes large, brownish, not so prominent; ocelli pale brownish glassy, placed on vertex almost equal distance from eyes than each other;

pronotum large, more than four times as long as head, very convex, anterior and lateral margins angulately expanded, posterior margin strongly sinuated, anterior marginal areas dull ochraceous, coarsely punctured, the punctiations darker in hue; scutellum slightly longer than pronotum, acutely pointed, lateral margins slightly arched inwardly, dull olivaceous, apex dull ochraceous, centrally largely obscurely foveate, apex slightly shorter than abdomen; abdomen fuscous brown, somewhat shaded with pale brown, apex strongly bending upward, this part with greyish pilose.

Body beneath and legs ochraceous; face very convex, centrally very slightly foveate, laterally with eight transverse fuscous streaks, genae narrow, clypeus just reaching anterior coxae, rostrum reaching intermediate coxae, ovipositor brownish, slightly passing the apex of abdomen; legs and abdomen beneath more or less greyish pilose.

Tegmina pale smoky, semihyaline, convex, broad, coarsely fuscous punctured, basal one-third and central area broadly transversely obscurely fuscous, apical and costal margins with many fuscous spots, veins very obscure; wings hyaline, costal membrane triangularly expanded, veins prominent, fuscous, costal vein pale stramineous, claval area fuscous, subhyaline.

Length excl. tegm. 4mm.; incl. tegm. 7 mm.; exp. tegm. 12mm.

Hab. Formosa; Arisan (Oct.)

Family **CERCOPIDAE** 沫吹科

Genus **COSMOSCARTA**, Stal. コガシラアハフキ屬

Cosmoscarta uchidae Mats. var. **reticulata** var. nov.

(Pl. II. Fig. 5.)

This form is distinguishable from the typical species by the

aberration of tegminal markings as shown in figure, the black ground colour divided into about six parts by scarlet fasciae.

Hab. Formosa: Kusukusu near Koshun.

Explanations of Plate.

Plate I.

- Figs. 1, 1a. *Meimuna bonin-insulana* sp. nov. チガサハラツクツク
 2, 2a. *Platylomia matsumurai* sp. nov. ホウライゼミ
 3, 3a. *Meimuna amamioshimana* sp. nov. オホシマツクツク
 4. *Mogannia subfusca* sp. nov. ツマキクサゼミ

Plate II.

- Figs. 1, a, b. *Leptocentrus formosanus* sp. nov. タカネツノゼミ
 2. *Maurya angulatus* Funkh. タイラントビイロツノゼミ
 3, a, b, c. *Eupantaleon bufo* sp. nov. コアツノゼミ
 4, a, b. *Makiptyelus fasciatus* sp. nov. アリサンマキアハフキ
 5. *Cosmoscarta uchidae* Mats. var. *reticulata* var. nov.
 6. *Machaerota formosana* sp. nov. トゲアハフキ