

## VII-1. Plates 1



*Reg. No. 1 (Serrurier IV) :*

IV-A-1

*Reg. No. 2 (Serie 1) :*

1-808

*Descripton on the label :*

*Present description (English) :*

Clay colored by hematite or ironhydroxyde

*Present description (Japanese) :*

赤鉄鉱あるいは水酸化鉄などで着色された粘土

*Description in "Serie1" :*

Flesch met klei, vermengd met een weinig organische stof

*Reg. No. 3 (Nat. Mus. Eth.) :*

1011451



*Reg. No. 1 (Serrurier IV) :*

IV-A-2

*Reg. No. 2 (Serie 1) :*

1-809

*Descripton on the label :*

*Present description (English) :*

"root of Saposhnikovia seseloides" is wrong., a kind of pipe clay.

*Present description (Japanese) :*

「セリ科ボウフウの根」は誤り。粘土。

*Description in "Serie1" :*

Flesch met bij- en opschrift

*Reg. No. 3 (Nat. Mus. Eth.) :*

1011764



*Reg. No. 1 (Serrurier IV) :*

IV-A-3

*Reg. No. 2 (Serie 1) :*

1-810

*Descripton on the label :*

*Present description (English) :*

Migakisuna, polishing power,  
Chalk

*Present description (Japanese) :*

ミガキスナ、白亜

*Description in "Serie1" :*

Flesch met bijschrift

*Reg. No. 3 (Nat. Mus. Eth.) :*

1011726



*Reg. No. 1 (Serrurier IV) :*

IV-A-4

*Reg. No. 2 (Serie 1) :*

1-811

*Descripton on the label :*

漢滑石

*Present description (English) :*

Kankasseki, talc

*Present description (Japanese) :*

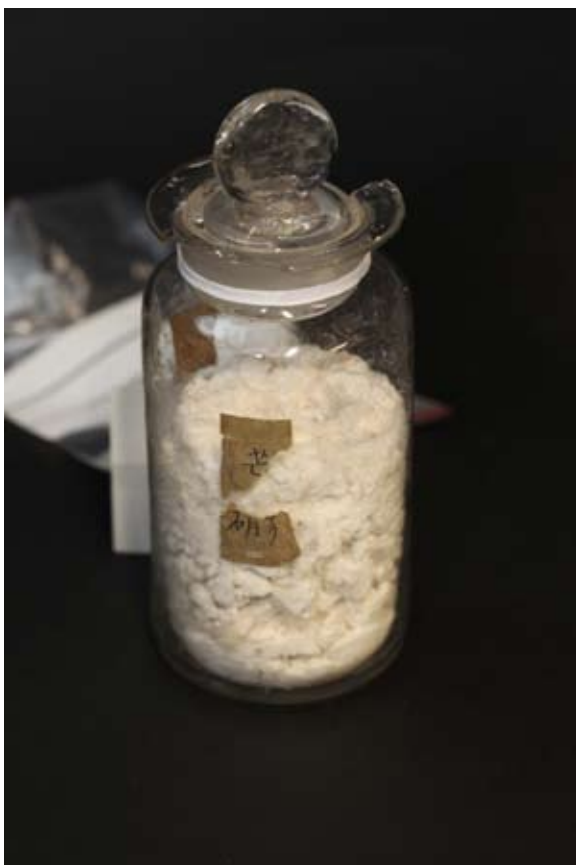
滑石

*Description in "Serie1" :*

Flesch met bijschrift

*Reg. No. 3 (Nat. Mus. Eth.) :*

1011456



*Reg. No. 1 (Serrurier IV) :*

IV-A-6

*Reg. No. 2 (Serie 1) :*

1-893

*Descripton on the label :*

芒硝

*Present description (English) :*

Bōsho, Na<sub>2</sub>SO<sub>4</sub> 10H<sub>2</sub>O

*Present description (Japanese) :*

芒硝

*Description in "Serie1" :*

Flesch met opschrift; volgens den Heer J. Bosscha inhoudende zoogen. Glauberzout

*Reg. No. 3 (Nat. Mus. Eth.) :*

1011813



*Reg. No. 1 (Serrurier IV) :*

IV-A-6a

*Reg. No. 2 (Serie 1) :*

1-894

*Descripton on the label :*

芒硝

*Present description (English) :*

Bōsho, Na<sub>2</sub>SO<sub>4</sub> 10H<sub>2</sub>O

*Present description (Japanese) :*

芒硝

*Description in "Serie1" :*

Flesch met opschrift; als voren Inhoud dezelfde bevonden

*Reg. No. 3 (Nat. Mus. Eth.) :*

1011731



*Reg. No. 1 (Serrurier IV) :*

IV-A-7

*Reg. No. 2 (Serie 1) :*

1-813

*Descripton on the label :*

土紅

*Present description (English) :*

Tokō, Fe<sub>2</sub>O<sub>3</sub>

*Present description (Japanese) :*

トコウ、酸化鉄ベンガラ

*Description in "Serie1" :*

Flesch met bijschrift

*Reg. No. 3 (Nat. Mus. Eth.) :*

1011733



*Reg. No. 1 (Serrurier IV) :*

IV-A-8

*Reg. No. 2 (Serie 1) :*

1-895

*Descripton on the label :*

*Present description (English) :*

powder bearing hematite

*Present description (Japanese) :*

赤石脂 / 代赭石か、鉄粉

*Description in "Serie1" :*

Flesch met bijschrift; bevonden te zijn ijzeroxide met een organische stof vermengt

*Reg. No. 3 (Nat. Mus. Eth.) :*

1011736



*Reg. No. 1 (Serrurier IV) :*

IV-A-50

*Reg. No. 2 (Serie 1) :*

1-892

*Description on the label :*

チヨハル

*Present description (English) :*

Chiyoharu, chalk,  $\text{CaCO}_3$

*Present description (Japanese) :*

チョーク

*Description in "Serie1" :*

Flesch zonder opschrift gevuld met koolzure kalk

*Reg. No. 3 (Nat. Mus. Eth.) :*

1011765



*Reg. No. 1 (Serrurier IV) :*

IV-A-88

*Reg. No. 2 (Serie 1) :*

1-896

*Description on the label :*

雄黄

*Present description (English) :*

Yuō, orpiment  $\text{As}_2\text{S}_3$

*Present description (Japanese) :*

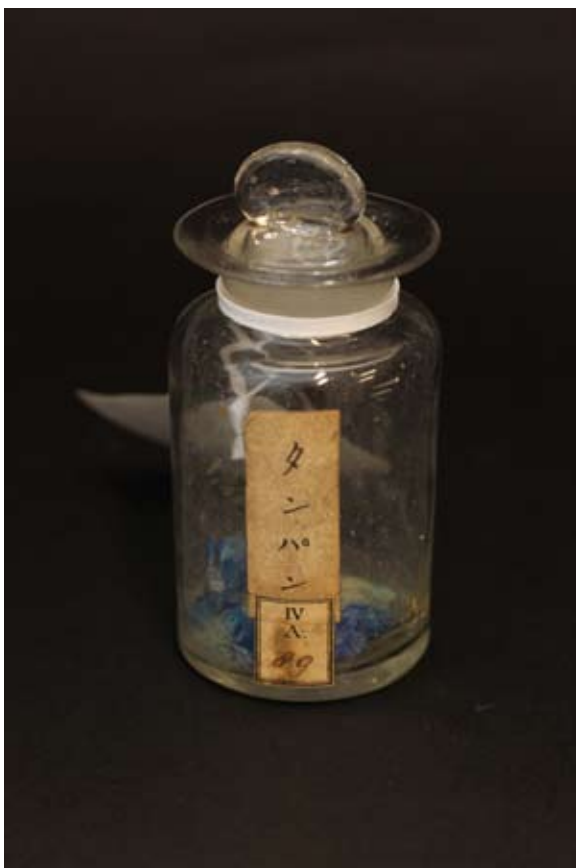
雄黄

*Description in "Serie1" :*

Flesch met opschrift

*Reg. No. 3 (Nat. Mus. Eth.) :*

1011788



*Reg. No. 1 (Serrurier IV) :*

IV-A-89

*Reg. No. 2 (Serie 1) :*

1-2364

*Description on the label :*

タンバン

*Present description (English) :*

Tanban, chalcantite

*Present description (Japanese) :*

硫酸第二銅

*Description in "Serie1" :*

Flesch met opschrift

*Reg. No. 3 (Nat. Mus. Eth.) :*

1011725



*Reg. No. 1 (Serrurier IV) :*

IV-A-90

*Reg. No. 2 (Serie 1) :*

1-2365

*Description on the label :*

*Present description (English) :*

iron alum,  $\text{Fe}_2(\text{SO}_4)_2 \cdot 12\text{H}_2\text{O}$

*Present description (Japanese) :*

鉄ミョウバン、媒染剤、硫酸第二鉄

*Description in "Serie1" :*

Flesch gevuld met ferrosulphaat (ijzer vitriool)

*Reg. No. 3 (Nat. Mus. Eth.) :*

1011726



*Reg. No. 1 (Serrurier IV) :*  
IV-A-92

*Reg. No. 2 (Serie 1) :*  
1-2366

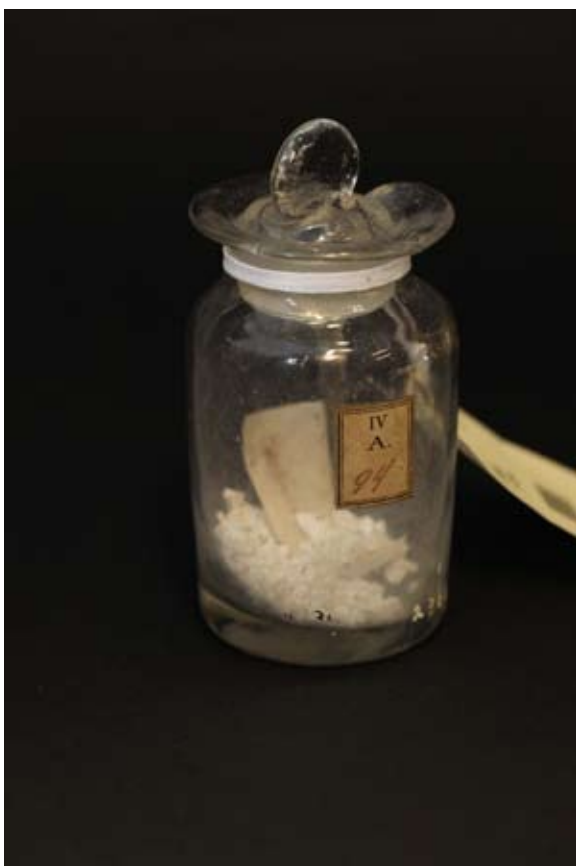
*Descripton on the label :*  
sulphur auratus/goudzwavel

*Present description (English) :*  
sulfur

*Present description (Japanese) :*  
橙色粉末、硫黄

*Description in "Serie1" :*  
Flesch met bijschrift , goudzwavel

*Reg. No. 3 (Nat. Mus. Eth.) :*  
1011724



*Reg. No. 1 (Serrurier IV) :*  
IV-A-94

*Reg. No. 2 (Serie 1) :*  
1-2369

*Descripton on the label :*  
Magnesia

*Present description (English) :*  
magnesia, MgO

*Present description (Japanese) :*  
マグネシア、酸化マグネシウム

*Description in "Serie1" :*  
Flesch met bijschrift, Magnesia

*Reg. No. 3 (Nat. Mus. Eth.) :*  
1011419



*Reg. No. 1 (Serrurier IV) :*

IV-B-2

*Reg. No. 2 (Serie 1) :*

1-794

*Descripton on the label :*



*Present description (English) :*

Rice, *Oryza sativa*

*Present description (Japanese) :*

イネ

*Description in "Serie1" :*

Monster rijst

*Reg. No. 3 (Nat. Mus. Eth.) :*

1017612

*Reg. No. 1 (Serrurier IV) :*

IV-B-3

*Reg. No. 2 (Serie 1) :*

1-795

*Descripton on the label :*



*Present description (English) :*

Rice, *Oryza sativa* (indica?)

*Present description (Japanese) :*

イネ

*Description in "Serie1" :*

Monster rijst in aren

*Reg. No. 3 (Nat. Mus. Eth.) :*

1017611

*Reg. No. 1 (Serrurier IV) :*  
IV-B-5

*Reg. No. 2 (Serie 1) :*

*Descripton on the label :*



*Present description (English) :*  
Millet, *Panicum crus-gali*

*Present description (Japanese) :*  
ヒエ

*Description in "Serie1" :*

*Reg. No. 3 (Nat. Mus. Eth.) :*  
1002344

---

*Reg. No. 1 (Serrurier IV) :*  
IV-B-7

*Reg. No. 2 (Serie 1) :*

*Descripton on the label :*



*Present description (English) :*  
Millet, *Panicum miliaceum*

*Present description (Japanese) :*  
キビ

*Description in "Serie1" :*

*Reg. No. 3 (Nat. Mus. Eth.) :*  
1002343

*Reg. No. 1 (Serrurier IV) :*

IV-B-9

*Reg. No. 2 (Serie 1) :*

*Descripton on the label :*

*Present description (English) :*

Wheat, *Triticum*

*Present description (Japanese) :*

コムギ

*Description in "Serie1" :*



*Reg. No. 3 (Nat. Mus. Eth.) :*

1002347

*Reg. No. 1 (Serrurier IV) :*

IV-B-10

*Reg. No. 2 (Serie 1) :*

1-931

*Descripton on the label :*

*Present description (English) :*

Hyakusasō, charcoal of burned plants

*Present description (Japanese) :*

百艸霜ヒャクサソウ、植物を燃やした炭

*Description in "Serie1" :*

Flesch met opschrift



*Reg. No. 3 (Nat. Mus. Eth.) :*

1011436

*Reg. No. 1 (Serrurier IV) :*  
IV-B-11

*Reg. No. 2 (Serie 1) :*

*Description on the label :*



*Present description (English) :*  
Millet, *Sorghum bicolor*

*Present description (Japanese) :*  
モロコシ

*Description in "Serie1" :*

*Reg. No. 3 (Nat. Mus. Eth.) :*  
1002114

---

*Reg. No. 1 (Serrurier IV) :*  
IV-B-12

*Reg. No. 2 (Serie 1) :*

*Description on the label :*



*Present description (English) :*  
Corn, *Zea mays*

*Present description (Japanese) :*  
トウモロコシ

*Description in "Serie1" :*

*Reg. No. 3 (Nat. Mus. Eth.) :*  
1002118

*Reg. No. 1 (Serrurier IV) :*  
IV-B-13

*Reg. No. 2 (Serie 1) :*

*Descripton on the label :*

*Present description (English) :*  
Legume, *Vicia faba*?

*Present description (Japanese) :*  
ソラマメ?

*Description in "Serie1" :*



*Reg. No. 3 (Nat. Mus. Eth.) :*  
1002346

*Reg. No. 1 (Serrurier IV) :*  
IV-B-15

*Reg. No. 2 (Serie 1) :*

*Descripton on the label :*

*Present description (English) :*  
Legume, *Glycine max*

*Present description (Japanese) :*  
ダイズ

*Description in "Serie1" :*



*Reg. No. 3 (Nat. Mus. Eth.) :*  
1002116

*Reg. No. 1 (Serrurier IV) :*

IV-B-16

*Reg. No. 2 (Serie 1) :*

*Descripton on the label :*



*Present description (English) :*

Legume, *Lablab purpurens*  
(*Dolichos lablab*)

*Present description (Japanese) :*

フジマメ

*Description in "Serie1" :*

*Reg. No. 3 (Nat. Mus. Eth.) :*

1002352



*Reg. No. 1 (Serrurier IV) :*

IV-B-19

*Reg. No. 2 (Serie 1) :*

1-833

*Descripton on the label :*

*Present description (English) :*

Mishimanori, a kind of  
*Gloiopeltis* J. Agardh

*Present description (Japanese) :*

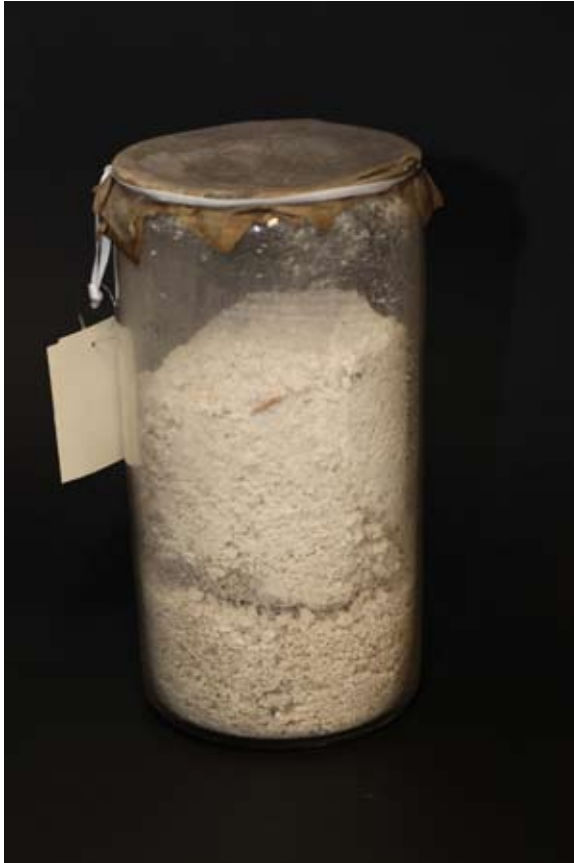
三島苔 (ノリ)

*Description in "Serie1" :*

Flesch met een  
gebruiksaanwijzing (ink: een  
soort van eetbaar zeewier)

*Reg. No. 3 (Nat. Mus. Eth.) :*

1011801



**Reg. No. 1 (Serrurier IV) :**

IV-B-23

**Reg. No. 2 (Serie 1) :**

1-832

**Descripton on the label :**

**Present description (English) :**

Kappun, root of *hirsuta* Tang et Wang)

**Present description (Japanese) :**

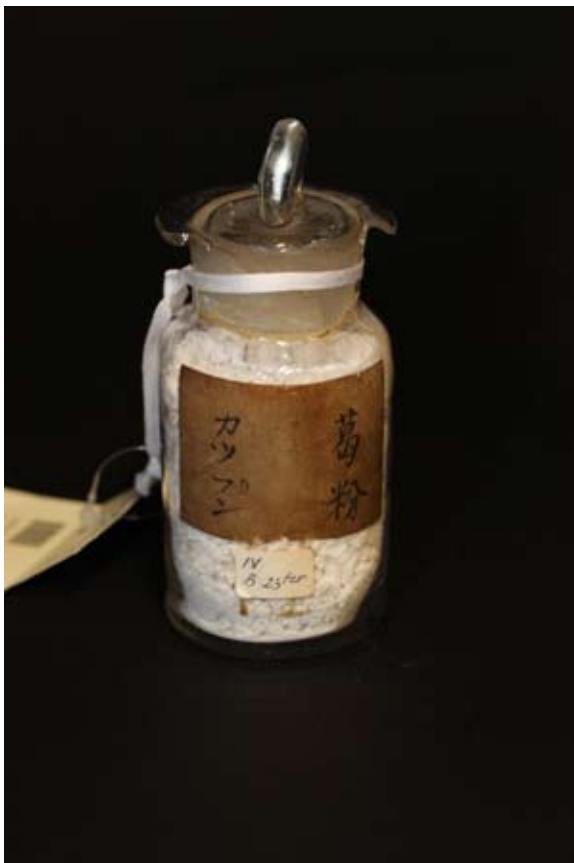
葛粉

**Description in "Serie1" :**

Flesch met hetzelfde meel, zie No.806

**Reg. No. 3 (Nat. Mus. Eth.) :**

1011798



**Reg. No. 1 (Serrurier IV) :**

IV-B-23ter

**Reg. No. 2 (Serie 1) :**

1-806

**Descripton on the label :**

葛粉

**Present description (English) :**

Kappun, kuzu [arrowroot] starch, powder of *Puersria lobata* Ohwi (*P. pseudo-hirsuta* Tang et Wang), *Puersria lobata* Ohwi var. *chinsis* (Benth.) Ohwi

**Present description (Japanese) :**

**Description in "Serie1" :**

Flesch met opschrift

**Reg. No. 3 (Nat. Mus. Eth.) :**

1011474



*Reg. No. 1 (Serrurier IV) :*

IV-B-23ter

*Reg. No. 2 (Serie 1) :*

1-814

*Descripton on the label :*

*Present description (English) :*

Honey of *Apis indica*  
Radoszkowski

*Present description (Japanese) :*

蜂蜜

*Description in "Serie1" :*

Flesch met lekhonig

*Reg. No. 3 (Nat. Mus. Eth.) :*

1011465



*Reg. No. 1 (Serrurier IV) :*

IV-B-24

*Reg. No. 2 (Serie 1) :*

1-807

*Descripton on the label :*

ショーフリ

*Present description (English) :*

Shofunori, *Gloiopeltis*

*Present description (Japanese) :*

フリ

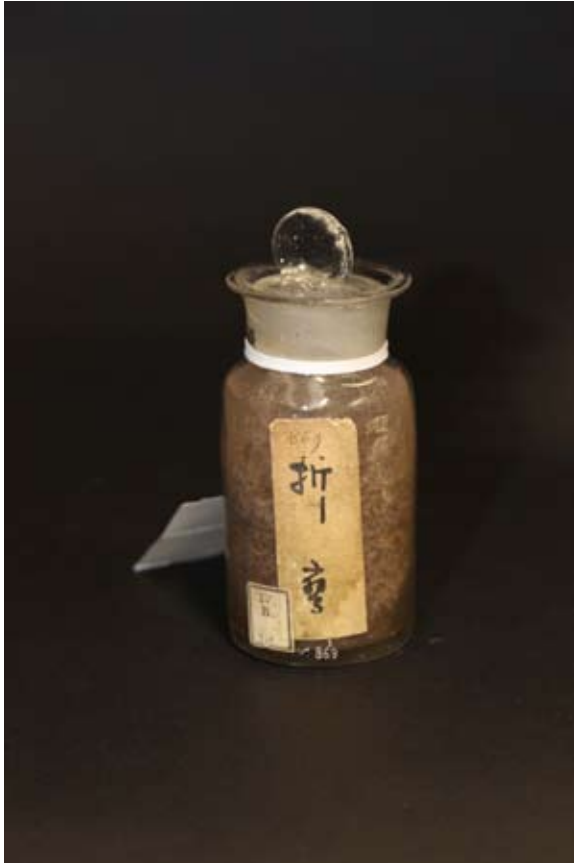
*Description in "Serie1" :*

Flesch met opschrift

*Reg. No. 3 (Nat. Mus. Eth.) :*

1011470





*Reg. No. 1 (Serrurier IV) :*  
IV-B-32

*Reg. No. 2 (Serie 1) :*  
1-869

*Descripton on the label :*  
折鷹

*Present description (English) :*  
tea leaves of "Oritaka"

*Present description (Japanese) :*  
茶葉、折鷹

*Description in "Serie1" :*  
Flesch met opschrift

*Reg. No. 3 (Nat. Mus. Eth.) :*  
1011477



*Reg. No. 1 (Serrurier IV) :*  
IV-B-35

*Reg. No. 2 (Serie 1) :*  
1-872

*Descripton on the label :*  
ハナタ . . .

*Present description (English) :*  
tea leaves of "Hanatachibana"

*Present description (Japanese) :*  
茶葉、花橘

*Description in "Serie1" :*  
Flesch met opschrift

*Reg. No. 3 (Nat. Mus. Eth.) :*  
1011811



*Reg. No. 1 (Serrurier IV) :*

IV-B-36

*Reg. No. 2 (Serie 1) :*

1-873

*Descripton on the label :*

*Present description (English) :*

tea leaves of "Imadegawa"

*Present description (Japanese) :*

茶葉、今出川

*Description in "Serie1" :*

Flesch met opschrift

*Reg. No. 3 (Nat. Mus. Eth.) :*

1011476



*Reg. No. 1 (Serrurier IV) :*

IV-B-37a

*Reg. No. 2 (Serie 1) :*

1-877

*Descripton on the label :*

上喜撰

*Present description (English) :*

tea leaves of "Jōkisen"

*Present description (Japanese) :*

茶葉、上喜撰

*Description in "Serie1" :*

Flesch met opschrift

*Reg. No. 3 (Nat. Mus. Eth.) :*

1011422



*Reg. No. 1 (Serrurier IV) :*

IV-B-40b/36quat

*Reg. No. 2 (Serie 1) :*

1-873

*Descripton on the label :*

白扇茶

*Present description (English) :*

tea leaves of "Hakusencha" by Imadegawa

*Present description (Japanese) :*

白扇茶, 今出川

*Description in "Serie1" :*

Flesch met opschrift

*Reg. No. 3 (Nat. Mus. Eth.) :*

1011434



*Reg. No. 1 (Serrurier IV) :*

IV-B-42

*Reg. No. 2 (Serie 1) :*

1-880

*Descripton on the label :*

*Present description (English) :*

tea leaves of "Hatsugasumi"

*Present description (Japanese) :*

茶葉、初霞

*Description in "Serie1" :*

Flesch met bijschrift "hatskasumi"

*Reg. No. 3 (Nat. Mus. Eth.) :*

1011809



*Reg. No. 1 (Serrurier IV) :*

IV-B-45bis

*Reg. No. 2 (Serie 1) :*

1-883

*Descripton on the label :*

*Present description (English) :*

tea leaves of "Fukuji" ?

*Present description (Japanese) :*

茶葉、fukuji ?

*Description in "Serie1" :*

Flesch met bijschrift "fukuji(?)"

*Reg. No. 3 (Nat. Mus. Eth.) :*

1025129



*Reg. No. 1 (Serrurier IV) :*

IV-B-46

*Reg. No. 2 (Serie 1) :*

1-885

*Descripton on the label :*

*Present description (English) :*

tea leaves of "Kangoo?"

*Present description (Japanese) :*

茶葉、kagoo ?

*Description in "Serie1" :*

Flesch met bijschrift "Kagoo"

*Reg. No. 3 (Nat. Mus. Eth.) :*

1011463



*Reg. No. 1 (Serrurier IV) :*

IV-B-47bis

*Reg. No. 2 (Serie 1) :*

1-886

*Descripton on the label :*

*Present description (English) :*

tea leaves of "Wakamidori"

*Present description (Japanese) :*

茶葉、若緑

*Description in "Serie1" :*

Zak met opschrift "wakamidori"  
en flesch met bijschrift  
"wakamidori"

*Reg. No. 3 (Nat. Mus. Eth.) :*

1011461



*Reg. No. 1 (Serrurier IV) :*

IV-B-48

*Reg. No. 2 (Serie 1) :*

1-887

*Descripton on the label :*

*Present description (English) :*

tea leaves of "Asahiyama"

*Present description (Japanese) :*

茶葉、朝日山

*Description in "Serie1" :*

Flesch met opschrift (asaviyama)

*Reg. No. 3 (Nat. Mus. Eth.) :*

1011460



*Reg. No. 1 (Serrurier IV) :*

IV-B-50bis

*Reg. No. 2 (Serie 1) :*

1-889

*Descripton on the label :*

老同茶

*Present description (English) :*

tea leaves of "Rōdōcha"

*Present description (Japanese) :*

茶葉、老同茶

*Description in "Serie1" :*

Zak met opschrift en flesch met op- en bijschrift

*Reg. No. 3 (Nat. Mus. Eth.) :*

1011446



*Reg. No. 1 (Serrurier IV) :*

IV-B-57

*Reg. No. 2 (Serie 1) :*

1-864

*Descripton on the label :*

麦鷹

*Present description (English) :*

tea leaves of "Mugitaka"

*Present description (Japanese) :*

茶葉、麦鷹

*Description in "Serie1" :*

Pot met op- en bijschrift en monsterzakje met opschrift

*Reg. No. 3 (Nat. Mus. Eth.) :*

1025123



*Reg. No. 1 (Serrurier IV) :*

IV-B-57

*Reg. No. 2 (Serie 1) :*

1-864

*Descripton on the label :*

*Present description (English) :*

tea leaves of "Mugitaka" ? In pot

*Present description (Japanese) :*

茶葉、麦鷹？

*Description in "Serie1" :*

Voorraad pot met deksel

*Reg. No. 3 (Nat. Mus. Eth.) :*



*Reg. No. 1 (Serrurier IV) :*

IV-B-51bis

*Reg. No. 2 (Serie 1) :*

1-844

*Descripton on the label :*

*Present description (English) :*

tea leaves of "Satsuma"

*Present description (Japanese) :*

茶葉、さつまん？

*Description in "Serie1" :*

Zak met opschrift thee van t  
voor (vorstendom) en flesch met  
bijschrift

*Reg. No. 3 (Nat. Mus. Eth.) :*

1011467

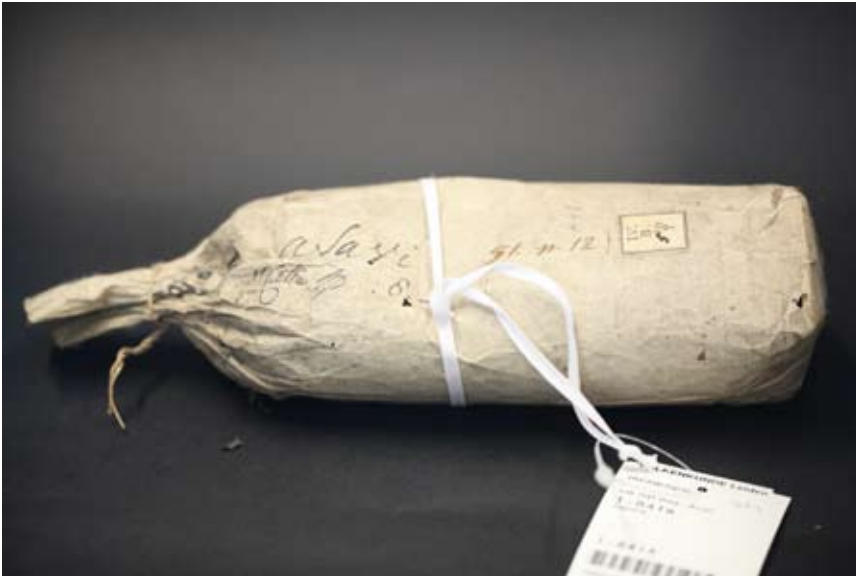
*Reg. No. 1 (Serrurier IV) :*

IV-B-54

*Reg. No. 2 (Serie 1) :*

1-841a

*Descripton on the label :*



*Present description (English) :*

tea leaves of "Yakutsuki"

*Present description (Japanese) :*

茶葉、約月

*Description in "Serie1" :*

Zak met opschrift en een  
proefglaasje met thee

*Reg. No. 3 (Nat. Mus. Eth.) :*

1014013



*Reg. No. 1 (Serrurier IV) :*

IV-B-54

*Reg. No. 2 (Serie 1) :*

1-841b

*Descripton on the label :*

約月

*Present description (English) :*

tea leaves of "Yakutsuki"

*Present description (Japanese) :*

茶葉、約月

*Description in "Serie1" :*

Zak met opschrift en een  
proefglaasje met thee

*Reg. No. 3 (Nat. Mus. Eth.) :*

1014013





*Reg. No. 1 (Serrurier IV) :*

IV-B-55bis

*Reg. No. 2 (Serie 1) :*

1-843c

*Descripton on the label :*

*Present description (English) :*

tea leaves of "Yamabuki"

*Present description (Japanese) :*

茶葉、山吹

*Description in "Serie1" :*

Twee zakken met opschrift,  
een flesch met bijschrift en  
proefglaasje met thee

*Reg. No. 3 (Nat. Mus. Eth.) :*

1011812



*Reg. No. 1 (Serrurier IV) :*

IV-B-56

*Reg. No. 2 (Serie 1) :*

1-845a

*Descripton on the label :*

好茶

*Present description (English) :*

tea leaves of "Kōcha"

*Present description (Japanese) :*

茶葉

*Description in "Serie1" :*

Twee fleschjes met opschrift  
(uitstekende thee)

*Reg. No. 3 (Nat. Mus. Eth.) :*

1011438



*Reg. No. 1 (Serrurier IV) :*

IV-B-56bis

*Reg. No. 2 (Serie 1) :*

1-845b

*Descripton on the label :*

好茶

*Present description (English) :*

tea leaves of "Kōcha"

*Present description (Japanese) :*

茶葉

*Description in "Serie1" :*

Twee fleschjes met opschrift  
(uitstekende thee)

*Reg. No. 3 (Nat. Mus. Eth.) :*

1011464



*Reg. No. 1 (Serrurier IV) :*

IV-B-58

*Reg. No. 2 (Serie 1) :*

1-847

*Descripton on the label :*

若枝

*Present description (English) :*

tea leaves of "Wakaeda" prepared  
by Shirahama Zenzaburōzaemon

*Present description (Japanese) :*

茶葉、若枝、白濱善三郎左衛門製

*Description in "Serie1" :*

Flesch met opschrift

*Reg. No. 3 (Nat. Mus. Eth.) :*

1011426



*Reg. No. 1 (Serrurier IV) :*

IV-B-59

*Reg. No. 2 (Serie 1) :*

1-848

*Descripton on the label :*

處入花

*Present description (English) :*

tea leaves of "Shonyūka"

*Present description (Japanese) :*

茶葉、處入花

*Description in "Serie1" :*

Flesch met opschrift

*Reg. No. 3 (Nat. Mus. Eth.) :*

1011455



*Reg. No. 1 (Serrurier IV) :*

IV-B-60/66

*Reg. No. 2 (Serie 1) :*

1-855

*Descripton on the label :*

*Present description (English) :*

tea leaves of "Futabanotsuyu"

*Present description (Japanese) :*

二葉の露

*Description in "Serie1" :*

Flesch met ineengevlochten en gedraaide thee (?) bladeren

*Reg. No. 3 (Nat. Mus. Eth.) :*

1011420



*Reg. No. 1 (Serrurier IV) :*

IV-B-67

*Reg. No. 2 (Serie 1) :*

1-856

*Descripton on the label :*

*Present description (English) :*

fragments of wood-like material with Japanese characters or something like marks, unidentified, according to "Serie 1", pressed tea

*Present description (Japanese) :*

木片に絵、文字、詳細不明、Serie 1によると板状にされた茶

*Description in "Serie1" :*

Flesch met geperste thee in platte stukken gestempeld met figuren

*Reg. No. 3 (Nat. Mus. Eth.) :*

1011808



*Reg. No. 1 (Serrurier IV) :*

IV-B-70

*Reg. No. 2 (Serie 1) :*

1-906

*Descripton on the label :*

漢黄芩

*Present description (English) :*

Kikikon, *Scutellaria baicalensis*  
Geogi

*Present description (Japanese) :*

キキコン、おうごん (コガネバナ)

*Description in "Serie1" :*

Flesch met opschrift

*Reg. No. 3 (Nat. Mus. Eth.) :*

1011461



**Reg. No. 1 (Serrurier IV) :**

IV-B-71

**Reg. No. 2 (Serie 1) :**

1-898

**Descripton on the label :**

使君子

**Present description (English) :**

Shikunshi, *Quisqualis indica* L.

**Present description (Japanese) :**

フトモモ目シクンシ科、つる性の植物

**Description in "Serie1" :**

Flesch met opschrift "si kun si" d.i. zaad van *quisqualis sinensis* Lindl.

**Reg. No. 3 (Nat. Mus. Eth.) :**

1011755



**Reg. No. 1 (Serrurier IV) :**

IV-B-72

**Reg. No. 2 (Serie 1) :**

1-899

**Descripton on the label :**

辛夷

**Present description (English) :**

Kobushi, buds of *Magnolia salicifolia* (Sieb. et Zucc.) Maxim.

**Present description (Japanese) :**

コブシ

**Description in "Serie1" :**

Flesch met opschrift "kovusi" d.i. zaad van *Burgeria stellata*

**Reg. No. 3 (Nat. Mus. Eth.) :**

1011790



*Reg. No. 1 (Serrurier IV) :*

IV-B-73

*Reg. No. 2 (Serie 1) :*

1-900

*Descripton on the label :*

甘遂

*Present description (English) :*

Kansho, root of *Euphorbia kansui*  
Liou

*Present description (Japanese) :*

カンシヨ

*Description in "Serie1" :*

Flesch opschrift "kan siyo" (zaad  
van) *Cuphorbia Japonica* Lieb.

*Reg. No. 3 (Nat. Mus. Eth.) :*

1011791



*Reg. No. 1 (Serrurier IV) :*

IV-B-73a

*Reg. No. 2 (Serie 1) :*

1-901

*Descripton on the label :*

大甘遂

*Present description (English) :*

Kanzui, root of *Euphorbia kansui*  
Liou

*Present description (Japanese) :*

カンズイ

*Description in "Serie1" :*

Flesch met opschrift. Met  
denzeld den inhoud als No.900

*Reg. No. 3 (Nat. Mus. Eth.) :*

1011795



*Reg. No. 1 (Serrurier IV) :*

IV-B-74

*Reg. No. 2 (Serie 1) :*

1-902

*Descripton on the label :*

香附子

*Present description (English) :*

Kōbushi, root of *Cyperus rotundus* L.

*Present description (Japanese) :*

コオフウジ

*Description in "Serie1" :*

Flesch met opschrift. Inhoud  
zaad van *Cyperus rotan*

*Reg. No. 3 (Nat. Mus. Eth.) :*

1011793



*Reg. No. 1 (Serrurier IV) :*

IV-B-75

*Reg. No. 2 (Serie 1) :*

1-903

*Descripton on the label :*

山椒

*Present description (English) :*

Sansho, *Zanthoxylum piperitum*  
DC.

*Present description (Japanese) :*

サンショ

*Description in "Serie1" :*

Flesch met opschrift

*Reg. No. 3 (Nat. Mus. Eth.) :*

1011468



*Reg. No. 1 (Serrurier IV) :*

IV-B-76

*Reg. No. 2 (Serie 1) :*

1-904

*Description on the label :*

クワテイ

*Present description (English) :*

katei, leafstalk of *Nelumbo nucifera* Gaertn.

*Present description (Japanese) :*

瓜蒂 (かてい) : マクワウリのヘタ) :  
催吐薬

*Description in "Serie1" :*

Flesch met opschrift

*Reg. No. 3 (Nat. Mus. Eth.) :*

1011797



*Reg. No. 1 (Serrurier IV) :*

IV-B-77

*Reg. No. 2 (Serie 1) :*

1-905

*Description on the label :*

ホウオウ

*Present description (English) :*

Hoō, *Typha latifolia* L.

*Present description (Japanese) :*

蒲黄

*Description in "Serie1" :*

Flesch met bijchrift

*Reg. No. 3 (Nat. Mus. Eth.) :*

1011767





**Reg. No. 1 (Serrurier IV) :**

IV-B-79

**Reg. No. 2 (Serie 1) :**

1-907

**Description on the label :**

山飯来

**Present description (English) :**

Sankirai, *Rehmannia glutinosa*  
Libosch var. *purpurea* Makino

**Present description (Japanese) :**

サンキラ=山帰来 (サルトリイバラ)

**Description in "Serie1" :**

Flesch met opschrift

**Reg. No. 3 (Nat. Mus. Eth.) :**

1011786



**Reg. No. 1 (Serrurier IV) :**

IV-B-80

**Reg. No. 2 (Serie 1) :**

1-908

**Description on the label :**

常山

**Present description (English) :**

Jozan, root of *Dichroa febrifuga*  
Lour.

**Present description (Japanese) :**

ジョウザンアジサイの根

**Description in "Serie1" :**

Flesch met opschrift

**Reg. No. 3 (Nat. Mus. Eth.) :**

1011763



*Reg. No. 1 (Serrurier IV) :*

IV-B-81

*Reg. No. 2 (Serie 1) :*

1-909

*Descripton on the label :*

乾地黄

*Present description (English) :*

Kan-Jiō, root of *Rehmannia glutinosa* Libosch var. *purpurea* Makino

*Present description (Japanese) :*

ジオウ、ゴマノハグサ科アカヤジオウの根

*Description in "Serie1" :*

Flesch met opschrift

*Reg. No. 3 (Nat. Mus. Eth.) :*

1011785



*Reg. No. 1 (Serrurier IV) :*

IV-B-82

*Reg. No. 2 (Serie 1) :*

1-910

*Descripton on the label :*

加洲黄連

*Present description (English) :*

Kashūoren, root of *Copis japonica*

*Present description (Japanese) :*

オウレン、キンポウゲ科オウレンの根

*Description in "Serie1" :*

Flesch met opschrift

*Reg. No. 3 (Nat. Mus. Eth.) :*

1011803



**Reg. No. 1 (Serrurier IV) :**

IV-B-83

**Reg. No. 2 (Serie 1) :**

1-911

**Descripton on the label :**

羌活

**Present description (English) :**

Kyōkatsu, root of *Notopterygium incisum* Ting *Notopterygium forbesii* Boiss. (= *N. franchetii* Boiss.)

**Present description (Japanese) :**

キョウカツ、(ノトプテリギウム)の根

**Description in "Serie1" :**

Flesch met opschrift

**Reg. No. 3 (Nat. Mus. Eth.) :**

1011761



**Reg. No. 1 (Serrurier IV) :**

IV-B-84

**Reg. No. 2 (Serie 1) :**

1-912

**Descripton on the label :**

漢黄芩

**Present description (English) :**

Kan-ōgi, root of *Astragalus membranaceus* (Fisch.) Bunge

**Present description (Japanese) :**

オオキ、ツリガネソウの根

**Description in "Serie1" :**

Flesch met opschrift

**Reg. No. 3 (Nat. Mus. Eth.) :**

1011789



*Reg. No. 1 (Serrurier IV) :*

IV-B-85

*Reg. No. 2 (Serie 1) :*

1-913

*Descripton on the label :*

新桔梗

*Present description (English) :*

Kikyō, root of *Euphorbia kansui*  
Liou

*Present description (Japanese) :*

キキョウ

*Description in "Serie1" :*

Flesch met opschrift

*Reg. No. 3 (Nat. Mus. Eth.) :*

1011792



*Reg. No. 1 (Serrurier IV) :*

IV-B-86

*Reg. No. 2 (Serie 1) :*

1-914

*Descripton on the label :*

青木香

*Present description (English) :*

Aomokkō, root of *Aristolochica*  
*debilis* Sieb. et Zucc

*Present description (Japanese) :*

アオモッコウ、ムマノスス、マル  
バノスズクサ、ムマノスズクサの  
根

*Description in "Serie1" :*

Flesch met opschrift

*Reg. No. 3 (Nat. Mus. Eth.) :*

1011796



*Reg. No. 1 (Serrurier IV) :*

IV-B-88

*Reg. No. 2 (Serie 1) :*

1-916

*Descripton on the label :*

*Present description (English) :*

Shakan, root of *Belamcanda chinensis* (L.) DC.

*Present description (Japanese) :*

射干しゃかん (ヒオウギの根)

*Description in "Serie1" :*

Flesch met opschrift

*Reg. No. 3 (Nat. Mus. Eth.) :*

1011769



*Reg. No. 1 (Serrurier IV) :*

IV-B-90

*Reg. No. 2 (Serie 1) :*

1-918

*Descripton on the label :*

芫花

*Present description (English) :*

Genka, buds of *Daphne genkwa*

*Present description (Japanese) :*

ゲンクワ シチシン、ヂンチョウ  
ゲ科フジモドキの花蕾

*Description in "Serie1" :*

Flesch met opschrift

*Reg. No. 3 (Nat. Mus. Eth.) :*

1011789



**Reg. No. 1 (Serrurier IV) :**

IV-B-91

**Reg. No. 2 (Serie 1) :**

1-919

**Descripton on the label :**

苦齋頭藥

**Present description (English) :**

Kusaizuyaku, maybe trade name of a Chinese drug for headache

**Present description (Japanese) :**

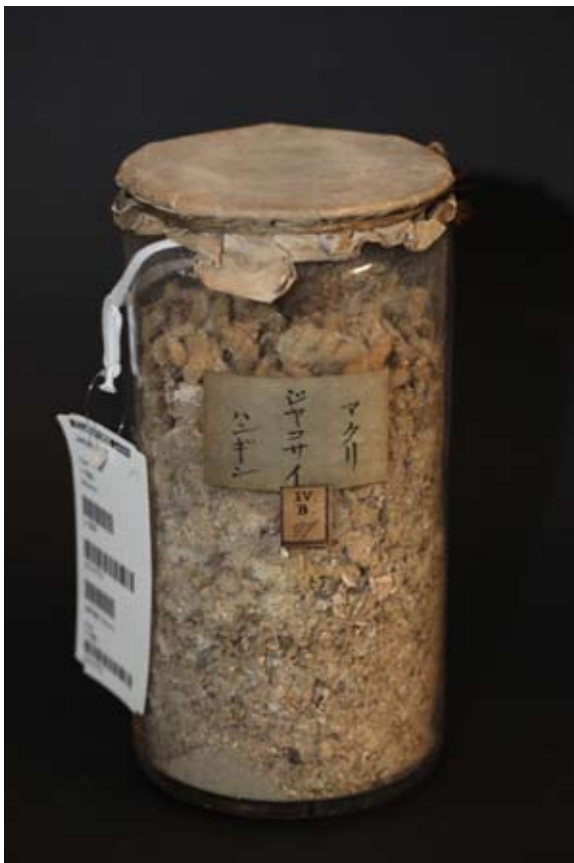
クサイズヤク

**Description in "Serie1" :**

Flesch met opschrift

**Reg. No. 3 (Nat. Mus. Eth.) :**

1011430



**Reg. No. 1 (Serrurier IV) :**

IV-B-91

**Reg. No. 2 (Serie 1) :**

1-925

**Descripton on the label :**

マクリ：海人草（カイニンソウ）、ジャコサイ ハンギン、フジマツモ科マクリ

**Present description (English) :**

Makuri, *Digenea simplex* Agardh

**Present description (Japanese) :**

マクリ ジャコサイ ハンギン

**Description in "Serie1" :**

Flesch met opschrift

**Reg. No. 3 (Nat. Mus. Eth.) :**

1011773



*Reg. No. 1 (Serrurier IV) :*

IV-B-92

*Reg. No. 2 (Serie 1) :*

1-920

*Descripton on the label :*

*Present description (English) :*

root of *Asiasalum siedoldi* (Miq.)  
F. Makawa

*Present description (Japanese) :*

細辛サイジン、ウスバサイシンの  
根

*Description in "Serie1" :*

Flesch met opschrift

*Reg. No. 3 (Nat. Mus. Eth.) :*

1011423



*Reg. No. 1 (Serrurier IV) :*

IV-B-93

*Reg. No. 2 (Serie 1) :*

1-921

*Descripton on the label :*

漢蒼木 (朮?)

*Present description (English) :*

Kan-Sōjutsu, root of *Atractylodes lancea* DC.

*Present description (Japanese) :*

ソウシツ、ソウジュツ、ウスバオ  
ケラの根

*Description in "Serie1" :*

Flesch met opschrift

*Reg. No. 3 (Nat. Mus. Eth.) :*

1011787



*Reg. No. 1 (Serrurier IV) :*

IV-B-94

*Reg. No. 2 (Serie 1) :*

1-922

*Descripton on the label :*

南五味子

*Present description (English) :*

Minamigomishi, *Kazura longipedunculata* Finet et Gagnepin

*Present description (Japanese) :*

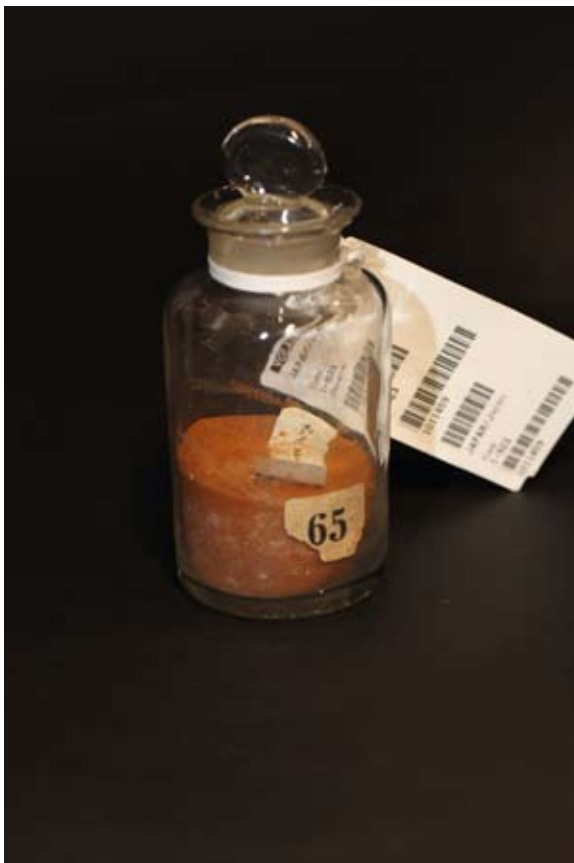
ヒナンソウ、サ子カヅラ

*Description in "Serie1" :*

Flesch met opschrift

*Reg. No. 3 (Nat. Mus. Eth.) :*

1011478



*Reg. No. 1 (Serrurier IV) :*

IV-B-95

*Reg. No. 2 (Serie 1) :*

1-923

*Descripton on the label :*

カイキシンシャ

*Present description (English) :*

Kaikinsha, spore of *Lygodium japonicum* (Thunb.) Sw.

*Present description (Japanese) :*

海金砂 (シダ植物の孢子)、カニクサ

*Description in "Serie1" :*

Flesch met bijchrift

*Reg. No. 3 (Nat. Mus. Eth.) :*

1011459





*Reg. No. 1 (Serrurier IV) :*

IV-B-96

*Reg. No. 2 (Serie 1) :*

1-924

*Descripton on the label :*

昆布

*Present description (English) :*

Konbu, *Laminariaceae* Bory

*Present description (Japanese) :*

*Description in "Serie1" :*

Fleisch met opschrift

*Reg. No. 3 (Nat. Mus. Eth.) :*

1011772



*Reg. No. 1 (Serrurier IV) :*

IV-B-98

*Reg. No. 2 (Serie 1) :*

1-926

*Descripton on the label :*

大白茯苓

*Present description (English) :*

Obukusō, *Poría cocos* Wolf

*Present description (Japanese) :*

ブクソウ、松の根に寄生する菌

*Description in "Serie1" :*

Fleisch met opschrift

*Reg. No. 3 (Nat. Mus. Eth.) :*

1011762



*Reg. No. 1 (Serrurier IV) :*

IV-B-100

*Reg. No. 2 (Serie 1) :*

1-028

*Descripton on the label :*

Een idem met een soort van  
zwam zonder opschrift

*Present description (English) :*

A kind of mushroom

*Present description (Japanese) :*

*Description in "Serie1" :*

*Reg. No. 3 (Nat. Mus. Eth.) :*

1011454



*Reg. No. 1 (Serrurier IV) :*

IV-B-102

*Reg. No. 2 (Serie 1) :*

1-930

*Descripton on the label :*

艾

*Present description (English) :*

Mogusa, cilia of leaves of  
*Artemisia*

*Present description (Japanese) :*

艾

*Description in "Serie1" :*

Flesch met opschrift

*Reg. No. 3 (Nat. Mus. Eth.) :*

1011794



*Reg. No. 1 (Serrurier IV) :*

IV-B-104

*Reg. No. 2 (Serie 1) :*

1-932

*Descripton on the label :*

*Present description (English) :*

Furyūkan, Burned soil in oven

*Present description (Japanese) :*

伏龍肝 (フリュウカン)、黄土で作った竈の焼けた土

*Description in "Serie1" :*

Flesch met bijschrift

*Reg. No. 3 (Nat. Mus. Eth.) :*

1011448



*Reg. No. 1 (Serrurier IV) :*

IV-B-105

*Reg. No. 2 (Serie 1) :*

1-2934

*Descripton on the label :*

紫草、ムラサキ

*Present description (English) :*

Murasaki, *Lithospermum erythrorhizon* Sieb. et Zucc.

*Present description (Japanese) :*

ムラサキ

*Description in "Serie1" :*

Flesch met opschrift

*Reg. No. 3 (Nat. Mus. Eth.) :*

1011735



*Reg. No. 1 (Serrurier IV) :*  
IV-B-107

*Reg. No. 2 (Serie 1) :*  
1-936

*Descripton on the label :*

*Present description (English) :*  
tea leaves of "Gaijicha"

*Present description (Japanese) :*  
孩兒茶

*Description in "Serie1" :*  
Flesch met opschrift

*Reg. No. 3 (Nat. Mus. Eth.) :*  
1011722



*Reg. No. 1 (Serrurier IV) :*  
IV-B-110

*Reg. No. 2 (Serie 1) :*  
1-3685

*Descripton on the label :*  
抱龍

*Present description (English) :*  
Hōryū, trade name of a Chinese drug

*Present description (Japanese) :*  
漢方薬

*Description in "Serie1" :*

*Reg. No. 3 (Nat. Mus. Eth.) :*  
1011473



*Reg. No. 1 (Serrurier IV) :*

IV-B-110bis

*Reg. No. 2 (Serie 1) :*

1-3686

*Descripton on the label :*

抱龍

*Present description (English) :*

Hōryū, trade name of a Chinese drug

*Present description (Japanese) :*

漢方薬

*Description in "Serie1" :*

*Reg. No. 3 (Nat. Mus. Eth.) :*

1011452



*Reg. No. 1 (Serrurier IV) :*

IV-B-111

*Reg. No. 2 (Serie 1) :*

1-3638

*Descripton on the label :*

寧坤

*Present description (English) :*

Neikon, trade name of a Chinese drug

*Present description (Japanese) :*

漢方薬

*Description in "Serie1" :*

*Reg. No. 3 (Nat. Mus. Eth.) :*

1011458



*Reg. No. 1 (Serrurier IV) :*

IV-B-113

*Reg. No. 2 (Serie 1) :*

1-3689

*Descripton on the label :*

蘇合

*Present description (English) :*

Sogō, trade name of Chinese drug of *Liquidambar orientalis* Mill.

*Present description (Japanese) :*

冠心蘇合丸 (漢方の精力剤)

*Description in "Serie1" :*

*Reg. No. 3 (Nat. Mus. Eth.) :*

1011428



*Reg. No. 1 (Serrurier IV) :*

IV-B-114

*Reg. No. 2 (Serie 1) :*

1-3690

*Descripton on the label :*

抱龍・寧坤、活絡、蘇合

*Present description (English) :*

Houryuu, Neikon, Katsuraku, Sogou ; trade names of chinese drugs

*Present description (Japanese) :*

漢方の丸薬 (活絡健歩丸、冠心蘇合丸)

*Description in "Serie1" :*

*Reg. No. 3 (Nat. Mus. Eth.) :*

1011475



*Reg. No. 1 (Serrurier IV) :*

IV-B-116

*Reg. No. 2 (Serie 1) :*

1-939

*Description on the label :*

第一号丸

*Present description (English) :*

Dai ichigo-yakugan, pill of No. 1

*Present description (Japanese) :*

第一号丸

*Description in "Serie1" :*

Fleisch met opschrift

*Reg. No. 3 (Nat. Mus. Eth.) :*

1011728



*Reg. No. 1 (Serrurier IV) :*

IV-B-117

*Reg. No. 2 (Serie 1) :*

1-940

*Description on the label :*

第二号散

*Present description (English) :*

Dai nigo-yakusan, powder drug  
No. 2

*Present description (Japanese) :*

第二号散

*Description in "Serie1" :*

Fleisch met opschrift

*Reg. No. 3 (Nat. Mus. Eth.) :*

1011445



*Reg. No. 1 (Serrurier IV) :*

IV-B-118

*Reg. No. 2 (Serie 1) :*

1-941

*Descripton on the label :*

喉瘋散

*Present description (English) :*

Kofusan, powder for throat

*Present description (Japanese) :*

喉の粉薬

*Description in "Serie1" :*

Flesch met opschriftI

*Reg. No. 3 (Nat. Mus. Eth.) :*

1011424



*Reg. No. 1 (Serrurier IV) :*

IV-B-122

*Reg. No. 2 (Serie 1) :*

1-2932

*Descripton on the label :*

新色好紅花

*Present description (English) :*

Benihana, *Carthamus tinctorius*  
L.

*Present description (Japanese) :*

ベニハナ

*Description in "Serie1" :*

Flesch met opschrift

*Reg. No. 3 (Nat. Mus. Eth.) :*

1011782





**Reg. No. 1 (Serrurier IV) :**

IV-B-123

**Reg. No. 2 (Serie 1) :**

1-981

**Descripton on the label :**

五倍子

**Present description (English) :**

Kibushi, dye from *Rhus javanica* L. (=R. semialata Murr.; *R. chinensis* Mill.) *Schlechtendaria chinensis* Bell (=Melaphis *chinensis* Bell)

**Present description (Japanese) :**

キブシで染料 (お歯黒)

**Description in "Serie1" :**

Eenpak galnoten (flesch met opschrift)

**Reg. No. 3 (Nat. Mus. Eth.) :**

1011429



**Reg. No. 1 (Serrurier IV) :**

IV-B-124

**Reg. No. 2 (Serie 1) :**

1-2933

**Descripton on the label :**

黄居子

**Present description (English) :**

Ōkyoshi, *Gardenia jasminoides*

**Present description (Japanese) :**

クチナシ

**Description in "Serie1" :**

Flesch met opschrift

**Reg. No. 3 (Nat. Mus. Eth.) :**

1011771



**Reg. No. 1 (Serrurier IV) :**

IV-B-137

**Reg. No. 2 (Serie 1) :**

1-1746

**Descripton on the label :**

五倍子

**Present description (English) :**

Kibushi, black dyestuffs, *Rhus javanica* L. (= *R. semialata* Murr.; *R. chinensis* Mill.), *Schlechtendaria chinensis* Bell, (= *Melaphis chinensys* Bell)

**Present description (Japanese) :**

フシ、キブシで染料（お歯黒）、

**Description in "Serie1" :**

Flesch met opschrift

**Reg. No. 3 (Nat. Mus. Eth.) :**

1011443



**Reg. No. 1 (Serrurier IV) :**

IV-B-137

**Reg. No. 2 (Serie 1) :**

1-943

**Descripton on the label :**

松脂、スギヤニ

**Present description (English) :**

Sugiyani, resin of *Cryptomeria japonica* (L.f.) D.Don

**Present description (Japanese) :**

スギヤニ、松脂

**Description in "Serie1" :**

Flesch met opschrift

**Reg. No. 3 (Nat. Mus. Eth.) :**

1011734



*Reg. No. 1 (Serrurier IV) :*

IV-B-138

*Reg. No. 2 (Serie 1) :*

1-942

*Descripton on the label :*

正直桃脂

*Present description (English) :*

Shōjikimomoyani, Wax from  
*Prunus persica* Batsc

*Present description (Japanese) :*

モモヤニ、桃脂

*Description in "Serie1" :*

Zakje met opschrift

*Reg. No. 3 (Nat. Mus. Eth.) :*

1011469



*Reg. No. 1 (Serrurier IV) :*

IV-B-139a

*Reg. No. 2 (Serie 1) :*

1-944

*Descripton on the label :*

極上松脂

*Present description (English) :*

Kowayani, resin of *Pinus*

*Present description (Japanese) :*

コワヤニ

*Description in "Serie1" :*

Flesch met opschrift

*Reg. No. 3 (Nat. Mus. Eth.) :*

1011814



*Reg. No. 1 (Serrurier IV) :*

IV-B-143b

*Reg. No. 2 (Serie 1) :*

1-2949

*Descripton on the label :*

藍

*Present description (English) :*

Ran/Ai, Indigo, *Persicaria tinctoria* (Aiton) Spach

*Present description (Japanese) :*

インディゴ

*Description in "Serie1" :*

Flesch met opschrift

*Reg. No. 3 (Nat. Mus. Eth.) :*

1011784

*Reg. No. 1 (Serrurier IV) :*

IV-B-197

*Reg. No. 2 (Serie 1) :*

1-799

*Descripton on the label :*

*Present description (English) :*

Millet, *Sorghum Sacharatum*

*Present description (Japanese) :*

サトウモロコシ

*Description in "Serie1" :*

Halm van Sorghum, wellicht  
S. Sacharatum grandstof voor  
bezems



*Reg. No. 3 (Nat. Mus. Eth.) :*

1002337



*Reg. No. 1 (Serrurier IV) :*

IV-B-209a

*Reg. No. 2 (Serie 1) :*

1-2502

*Descripton on the label :*

蠟

*Present description (English) :*

Rō, Wax

*Present description (Japanese) :*

ロウ

*Description in "Serie1" :*

Flesch met opschrift

*Reg. No. 3 (Nat. Mus. Eth.) :*

1011431



*Reg. No. 1 (Serrurier IV) :*

IV-B-213

*Reg. No. 2 (Serie 1) :*

1-946

*Descripton on the label :*

*Present description (English) :*

Usuomichi, wax

*Present description (Japanese) :*

うすおみち、うすもみち、ワックス

*Description in "Serie1" :*

Flesch met bijchrift

*Reg. No. 3 (Nat. Mus. Eth.) :*

1011756



*Reg. No. 1 (Serrurier IV) :*  
IV-C-1

*Reg. No. 2 (Serie 1) :*  
1-814

*Descripton on the label :*

*Present description (English) :*  
honig

*Present description (Japanese) :*  
蜂蜜

*Description in "Serie1" :*  
Een flesch met lekhonig

*Reg. No. 3 (Nat. Mus. Eth.) :*



*Reg. No. 1 (Serrurier IV) :*  
IV-C-2

*Reg. No. 2 (Serie 1) :*  
1-947

*Descripton on the label :*

*Present description (English) :*  
beef

*Present description (Japanese) :*  
牛肉

*Description in "Serie1" :*  
Flesch met opschrift

*Reg. No. 3 (Nat. Mus. Eth.) :*  
1011768



*Reg. No. 1 (Serrurier IV) :*

IV-C-3

*Reg. No. 2 (Serie 1) :*

1-948

*Descripton on the label :*

*Present description (English) :*

deer horn

*Present description (Japanese) :*

鹿の角

*Description in "Serie1" :*

Flesch

*Reg. No. 3 (Nat. Mus. Eth.) :*

1011482



*Reg. No. 1 (Serrurier IV) :*

IV-C-4

*Reg. No. 2 (Serie 1) :*

1-949

*Descripton on the label :*

鹿胎児

*Present description (English) :*

Rokutaiji, unborn child of deer

*Present description (Japanese) :*

鹿胎児

*Description in "Serie1" :*

Flesch met opschrift

*Reg. No. 3 (Nat. Mus. Eth.) :*

1011723



*Reg. No. 1 (Serrurier IV) :*  
IV-C-5

*Reg. No. 2 (Serie 1) :*  
1-950

*Descripton on the label :*  
猬皮

*Present description (English) :*  
Ihi, slin of the Hedgehog

*Present description (Japanese) :*  
ハリネズミの皮

*Description in "Serie1" :*  
Flesch met opschrift

*Reg. No. 3 (Nat. Mus. Eth.) :*  
1011481



*Reg. No. 1 (Serrurier IV) :*  
IV-C-6

*Reg. No. 2 (Serie 1) :*  
1-951

*Descripton on the label :*  
反鼻

*Present description (English) :*  
Hanbi, *Agkistrodon halys* Pallas

*Present description (Japanese) :*  
マムシの干物

*Description in "Serie1" :*  
Flesch met opschrift

*Reg. No. 3 (Nat. Mus. Eth.) :*  
1011476





*Reg. No. 1 (Serrurier IV) :*  
IV-C-7

*Reg. No. 2 (Serie 1) :*  
1-952

*Descripton on the label :*  
蛇退皮

*Present description (English) :*  
Jataihi, cast of snakes, such  
as *Elaphe climacophora* Boie,  
*Elaphe quadrivirgata* Boie,  
*Rhabdophis tigrinus* Boie

*Present description (Japanese) :*  
蛇の抜け殻

*Description in "Serie1" :*  
Flesch met opschrift

*Reg. No. 3 (Nat. Mus. Eth.) :*  
1011807



*Reg. No. 1 (Serrurier IV) :*  
IV-C-8

*Reg. No. 2 (Serie 1) :*  
1-953

*Descripton on the label :*  
アカガマ

*Present description (English) :*  
Akagama, frog of Ranidae

*Present description (Japanese) :*  
アカガエル

*Description in "Serie1" :*  
Flesch met opschrift

*Reg. No. 3 (Nat. Mus. Eth.) :*  
1011435



*Reg. No. 1 (Serrurier IV) :*

IV-C-10

*Reg. No. 2 (Serie 1) :*

1-955

*Descripton on the label :*

亀板

*Present description (English) :*

Kameita or Kiban, shell of

*Chinemys (Gleoclemys) reevesii*

Gra

*Present description (Japanese) :*

亀の甲羅

*Description in "Serie1" :*

Flesch met opschrift

*Reg. No. 3 (Nat. Mus. Eth.) :*

1011472



*Reg. No. 1 (Serrurier IV) :*

IV-C-11

*Reg. No. 2 (Serie 1) :*

1-956

*Descripton on the label :*

山椒魚

*Present description (English) :*

Sanshōuo, Cryptobranchoide

*Present description (Japanese) :*

山椒魚

*Description in "Serie1" :*

Flesch met opschrift

*Reg. No. 3 (Nat. Mus. Eth.) :*

1011471



*Reg. No. 1 (Serrurier IV) :*

IV-C-12

*Reg. No. 2 (Serie 1) :*

1-957

*Descripton on the label :*

\*生

*Present description (English) :*

Label of "Sökisei" is wrong. A kind of Tachinidae

*Present description (Japanese) :*

地蜂、ラベルにある桑寄生・ソウキセイ（桑寄生は宿り木）は誤り、カイコノウジバエか？

*Description in "Serie1" :*

Flesch met opschrift

*Reg. No. 3 (Nat. Mus. Eth.) :*

1011453



*Reg. No. 1 (Serrurier IV) :*

IV-C-14

*Reg. No. 2 (Serie 1) :*

1-959

*Descripton on the label :*

鹿虫

*Present description (English) :*

Jachū, *Eupolyphaga sinensis* Walker

*Present description (Japanese) :*

ジャチュウ

*Description in "Serie1" :*

Flesch met opschrift

*Reg. No. 3 (Nat. Mus. Eth.) :*

1011432



*Reg. No. 1 (Serrurier IV) :*

IV-C-15

*Reg. No. 2 (Serie 1) :*

1-960

*Descripton on the label :*

センダイ

*Present description (English) :*

Sendai, cicada's cast

*Present description (Japanese) :*

セミの抜け殻

*Description in "Serie1" :*

Flesch met opschrift

*Reg. No. 3 (Nat. Mus. Eth.) :*

1011730



*Reg. No. 1 (Serrurier IV) :*

IV-C-15/13

*Reg. No. 2 (Serie 1) :*

1-958

*Descripton on the label :*

*Present description (English) :*

Bochū, Tabanidae (Horse-fly)

*Present description (Japanese) :*

ボウチュウ、亡の下に虫、虻

*Description in "Serie1" :*

Flesch met opschrift

*Reg. No. 3 (Nat. Mus. Eth.) :*

1011810



**Reg. No. 1 (Serrurier IV) :**

IV-C-15/25c

**Reg. No. 2 (Serie 1) :**

1-969

**Descripton on the label :**

**Present description (English) :**

*Turbo (Lunella) coreensis*

**Present description (Japanese) :**

酢貝の蓋

**Description in "Serie1" :**

Flesch met bijschrift

**Reg. No. 3 (Nat. Mus. Eth.) :**

1011441



**Reg. No. 1 (Serrurier IV) :**

IV-C-16

**Reg. No. 2 (Serie 1) :**

1-961

**Descripton on the label :**

サウヒヤウソウ

**Present description (English) :**

Hyakusōsō, eggs of *Paratenodera sinensis* de Saussure, *Statilia maculata* Thunberg, *Mantis religiosa* L., *Hierodula patellifera* Serville

**Present description (Japanese) :**

桑（虫へんに票）蝟=かまぎりの卵

**Description in "Serie1" :**

Flesch met opschrift

**Reg. No. 3 (Nat. Mus. Eth.) :**

1011450



**Reg. No. 1 (Serrurier IV) :**  
IV-C-17?

**Reg. No. 2 (Serie 1) :**  
1-962

**Description on the label :**  
ヒヤクケウサン

**Present description (English) :**  
Hyakukeisan, *Bombyx mori* L.

**Present description (Japanese) :**  
白僵蚕 (ビヤッキョウサン)、蚕が  
菌に寄生されて白くなった

**Description in "Serie1" :**  
Flesch met opschrift

**Reg. No. 3 (Nat. Mus. Eth.) :**  
1011433



**Reg. No. 1 (Serrurier IV) :**  
IV-C-18

**Reg. No. 2 (Serie 1) :**  
1-3057

**Description on the label :**  
.....タイ

**Present description (English) :**  
Bameitai, cocoon of *Bombyx mori* L.

**Present description (Japanese) :**  
馬明退バメイタイ、蚕繭

**Description in "Serie1" :**  
Flesch met opschrift

**Reg. No. 3 (Nat. Mus. Eth.) :**  
1011447



*Reg. No. 1 (Serrurier IV) :*

IV-C-21

*Reg. No. 2 (Serie 1) :*

1-966

*Descripton on the label :*

蟹玉

*Present description (English) :*

Kanitama, Gastrolith of crab

*Present description (Japanese) :*

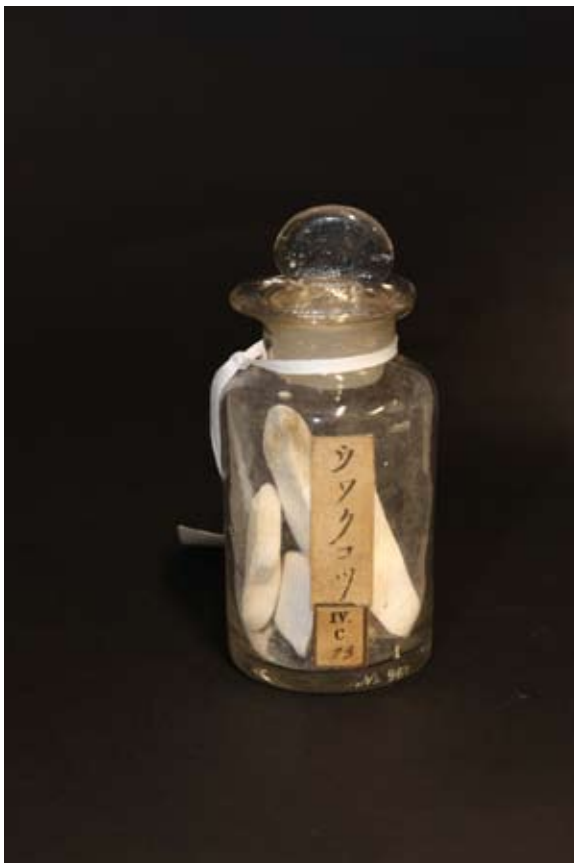
蟹の胃石 (priv. com. 山口隆男)

*Description in "Serie1" :*

Flesch met opschrift

*Reg. No. 3 (Nat. Mus. Eth.) :*

1011440



*Reg. No. 1 (Serrurier IV) :*

IV-C-23

*Reg. No. 2 (Serie 1) :*

1-067

*Descripton on the label :*

ウワクコツ

*Present description (English) :*

Uwakukotsu, *Sepia esculenta*  
Hoyle

*Present description (Japanese) :*

コウイカ

*Description in "Serie1" :*

*Reg. No. 3 (Nat. Mus. Eth.) :*

1011437



*Reg. No. 1 (Serrurier IV) :*

IV-C-24

*Reg. No. 2 (Serie 1) :*

1-968

*Descripton on the label :*

*Present description (English) :*

Bokai, Oyster shell

*Present description (Japanese) :*

牡蠣、ボカイ

*Description in "Serie1" :*

Flesch met opschrift

*Reg. No. 3 (Nat. Mus. Eth.) :*

1011766



*Reg. No. 1 (Serrurier IV) :*

IV-C-26

*Reg. No. 2 (Serie 1) :*

1-970

*Descripton on the label :*

*Present description (English) :*

Baishi, harmandiana  
Rochebrune, *Erronea erronea* L.,  
*Monetaria moneta* L.

*Present description (Japanese) :*

貝子バイシ、子安貝

*Description in "Serie1" :*

Flesch met opschrift

*Reg. No. 3 (Nat. Mus. Eth.) :*

1011479





*Reg. No. 1 (Serrurier IV) :*

IV-C-28

*Reg. No. 2 (Serie 1) :*

1-972

*Descripton on the label :*

五霊脂

*Present description (English) :*

Goreisi, dry dropping of  
*Trogopterus xanthipes* Milne-  
Edwards

*Present description (Japanese) :*

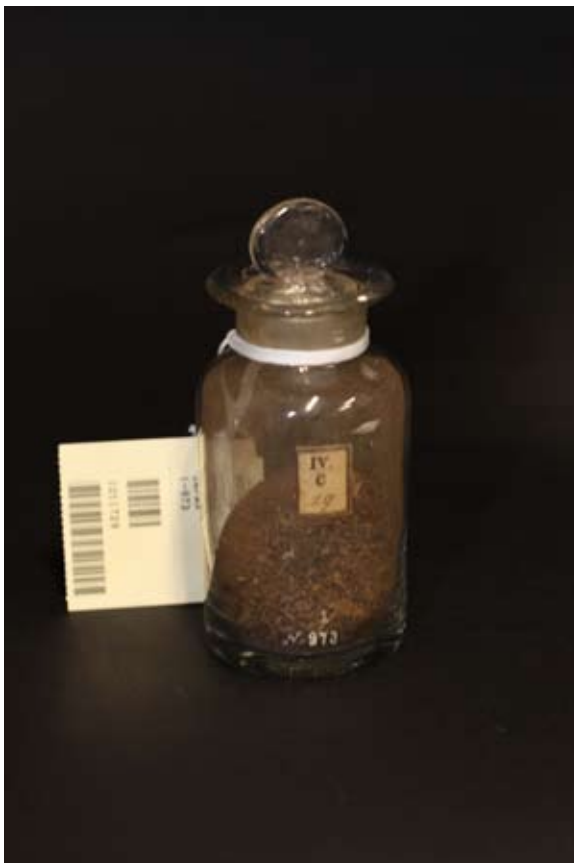
ムササビの乾燥糞

*Description in "Serie1" :*

Flesch met opschrift

*Reg. No. 3 (Nat. Mus. Eth.) :*

1011444



*Reg. No. 1 (Serrurier IV) :*

IV-C-29

*Reg. No. 2 (Serie 1) :*

1-973

*Descripton on the label :*

*Present description (English) :*

Yamyusha, dropping of bat

*Present description (Japanese) :*

夜明砂ヤミヨウシャ、蝙蝠の糞

*Description in "Serie1" :*

Flesch met bijchrift

*Reg. No. 3 (Nat. Mus. Eth.) :*

1011729



*Reg. No. 1 (Serrurier IV) :*

IV-C-32

*Reg. No. 2 (Serie 1) :*

1-976

*Descripton on the label :*

鹿角霜

*Present description (English) :*

Rokkakusō, mixture of pit viper,  
Freshwater Crab and deer horn

*Present description (Japanese) :*

伯州散 (ハクシュウサン): 反鼻 (まむし)、津蟹 (さわがに)、鹿角 (鹿の角) の各霜 (黒焼き) を混和

*Description in "Serie1" :*

Fleisch met opschrift

*Reg. No. 3 (Nat. Mus. Eth.) :*

1011770



*Reg. No. 1 (Serrurier IV) :*

IV-C-33

*Reg. No. 2 (Serie 1) :*

1-977

*Descripton on the label :*

テン (シ) セキ

*Present description (English) :*

Teshiseki, part of skal

*Present description (Japanese) :*

テシセキ

*Description in "Serie1" :*

Fleisch met opschrift

*Reg. No. 3 (Nat. Mus. Eth.) :*

1022494

*Reg. No. 1 (Serrurier IV) :*

IV-C-37

*Reg. No. 2 (Serie 1) :*

1-2995

*Descripton on the label :*

*Present description (English) :*

Japanese pearl oyster, *Pinctada fucata martensii*

*Present description (Japanese) :*

アコヤガイ

*Description in "Serie1" :*

Drie halve oesterschelpen



*Reg. No. 3 (Nat. Mus. Eth.) :*

1011640

*Reg. No. 1 (Serrurier IV) :*

IV-C-41

*Reg. No. 2 (Serie 1) :*

1-1650

*Descripton on the label :*

鬘髪

*Present description (English) :*

Mizuragami, banded hair for wig  
(?)

*Present description (Japanese) :*

束ねた頭髪、カツラ

*Description in "Serie1" :*

Flesch inhoudende een  
haarvlecht



*Reg. No. 3 (Nat. Mus. Eth.) :*

1011929



*Reg. No. 1 (Serrurier IV) :*

IV-C-48

*Reg. No. 2 (Serie 1) :*

1-979

*Descripton on the label :*

キン・・・ノリ

*Present description (English) :*

Kinpiranori, adhesive by glue

*Present description (Japanese) :*

キンピラノリ

*Description in "Serie1" :*

Flesch met opschrift

*Reg. No. 3 (Nat. Mus. Eth.) :*

1011439



*Reg. No. 1 (Serrurier IV) :*

IV-C-50

*Reg. No. 2 (Serie 1) :*

1-3058

*Descripton on the label :*

*Present description (English) :*

Silk

*Present description (Japanese) :*

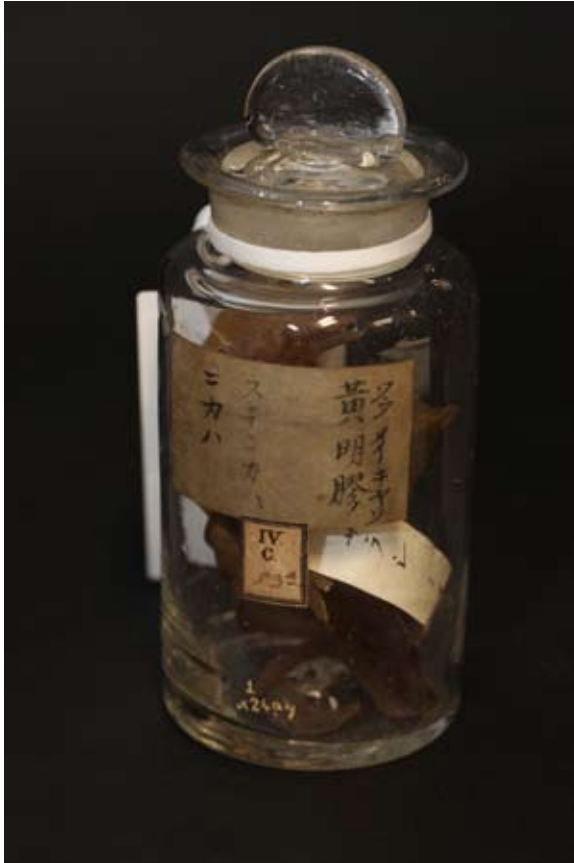
絹糸

*Description in "Serie1" :*

Fleschje met afgehaspelde witte zijde

*Reg. No. 3 (Nat. Mus. Eth.) :*

1011466



*Reg. No. 1 (Serrurier IV) :*

IV-C-53a

*Reg. No. 2 (Serie 1) :*

1-2497

*Descripton on the label :*

黄明膠

*Present description (English) :*

Ōmeikyō, Sarashinikawa, Gelatin of neat, *Bos taurus* L. var. *domesticus* Gmelin

*Present description (Japanese) :*

サラシニカワ

*Description in "Serie1" :*

Flesch met bijschrift (gele heldere lijm)

*Reg. No. 3 (Nat. Mus. Eth.) :*

1011783



*Reg. No. 1 (Serrurier IV) :*

IV-C-54

*Reg. No. 2 (Serie 1) :*

1-2498

*Descripton on the label :*

*Present description (English) :*

Mitsurō, Wax of *Apis indica* Radoszkowski

*Present description (Japanese) :*

蜜蝋

*Description in "Serie1" :*

Flesch met bijenwas

*Reg. No. 3 (Nat. Mus. Eth.) :*

1011442



*Reg. No. 1 (Serrurier IV) :*

IV-C-55

*Reg. No. 2 (Serie 1) :*

1-2500

*Descripton on the label :*

*Present description (English) :*

Ibota w ax (humor from Ibotamushi, an insect of a kind of coccoidea)

*Present description (Japanese) :*

イボタ蠟、イボタムシのつくる蠟で伊保多の字が当てられている。

*Description in "Serie1" :*

Flesch met was

*Reg. No. 3 (Nat. Mus. Eth.) :*

1011421



*Reg. No. 1 (Serrurier IV) :*

IV-C-56

*Reg. No. 2 (Serie 1) :*

1-980

*Descripton on the label :*

鯨糞

*Present description (English) :*

Geihun, Ambergris from *Physeter macrocephalus*, Sperm Whale

*Present description (Japanese) :*

竜涎香

*Description in "Serie1" :*

Flesch met opschrift

*Reg. No. 3 (Nat. Mus. Eth.) :*

1011480

*Reg. No. 1 (Serrurier IV) :*

*Reg. No. 2 (Serie 1) :*

00-1418

*Descripton on the label :*



*Present description (English) :*

pumice

*Present description (Japanese) :*

軽石

*Description in "Serie1" :*

*Reg. No. 3 (Nat. Mus. Eth.) :*

1011622

*Reg. No. 1 (Serrurier IV) :*

*Reg. No. 2 (Serie 1) :*

1-0-10

*Descripton on the label :*



*Present description (English) :*

tree bark

*Present description (Japanese) :*

木の皮

*Description in "Serie1" :*

*Reg. No. 3 (Nat. Mus. Eth.) :*

1011779



*Reg. No. 1 (Serrurier IV) :*

*Reg. No. 2 (Serie 1) :*

1-0-18

*Descripton on the label :*

*Present description (English) :*

Several kinds of fruits

*Present description (Japanese) :*

木の実各種

*Description in "Serie1" :*

*Reg. No. 3 (Nat. Mus. Eth.) :*

1011932



*Reg. No. 1 (Serrurier IV) :*

*Reg. No. 2 (Serie 1) :*

1-0-29

*Descripton on the label :*

*Present description (English) :*

a kind of herb

*Present description (Japanese) :*

植物（不明）

*Description in "Serie1" :*

Fles, stopfles & kruid

*Reg. No. 3 (Nat. Mus. Eth.) :*

1011934



*Reg. No. 1 (Serrurier IV) :*

*Reg. No. 2 (Serie 1) :*

1-0-7

*Descripton on the label :*



*Present description (English) :*

Indigo

*Present description (Japanese) :*

Indigo

*Description in "Serie1" :*

*Reg. No. 3 (Nat. Mus. Eth.) :*

1003487

*Reg. No. 1 (Serrurier IV) :*

*Reg. No. 2 (Serie 1) :*

1-0-9

*Descripton on the label :*

Indigo



*Present description (English) :*

Indigo, *Persicaria tinctoria* (Aiton)  
Spach

*Present description (Japanese) :*

Indigo

*Description in "Serie1" :*

*Reg. No. 3 (Nat. Mus. Eth.) :*

1017987

*Reg. No. 1 (Serrurier IV) :*

*Reg. No. 2 (Serie 1) :*

1-2482

*Descripton on the label :*



*Present description (English) :*

Ōmugai, *Argonauta hians* for  
japanese sake cup

*Present description (Japanese) :*

タコブネ、「盃」の書き込み

*Description in "Serie1" :*

Nautiluschelp als drinkschaal

*Reg. No. 3 (Nat. Mus. Eth.) :*

1012069

*Reg. No. 1 (Serrurier IV) :*

*Reg. No. 2 (Serie 1) :*

1-2483

*Descripton on the label :*



*Present description (English) :*

vase by coral

*Present description (Japanese) :*

花瓶、サンゴ

*Description in "Serie1" :*

Anzeegewas, als bloemvaas  
dienende

*Reg. No. 3 (Nat. Mus. Eth.) :*

1013994

*Reg. No. 1 (Serrurier IV) :*

*Reg. No. 2 (Serie 1) :*

1-2516

*Descripton on the label :*



*Present description (English) :*

Vase made of conglomerate with limonite

*Present description (Japanese) :*

花瓶

*Description in "Serie1" :*

Flesch van lava, met ijzeren ring

*Reg. No. 3 (Nat. Mus. Eth.) :*

1004454

*Reg. No. 1 (Serrurier IV) :*

*Reg. No. 2 (Serie 1) :*

1-2652

*Descripton on the label :*



*Present description (English) :*

weight for hanging scroll made of serpentine

*Present description (Japanese) :*

掛け軸用錘

*Description in "Serie1" :*

Twee groene steenen in den vorm van een ei, met doorboord gat

*Reg. No. 3 (Nat. Mus. Eth.) :*

1009754

*Reg. No. 1 (Serrurier IV) :*

*Reg. No. 2 (Serie 1) :*

1-2653/2653b/2654

*Descripton on the label :*

*Present description (English) :*

weight for hanging scroll made of amygdoidal basalt, similar to Siebold's Mineral Collection Reg. No. 328982: Amygdaloidal basalt from Awa.

*Present description (Japanese) :*

掛け軸用錘

*Description in "Serie1" :*

Twee donkerbruine steenen met witte stippen in den vorm van een ei/Twee donkerbruine steenen met witte stippen afgeplat bolvormig

*Reg. No. 3 (Nat. Mus. Eth.) :*

1013928



*Reg. No. 1 (Serrurier IV) :*

*Reg. No. 2 (Serie 1) :*

1-2791

*Descripton on the label :*

「果物の模型」

*Present description (English) :*

stone sphere (model of fruit?)

*Present description (Japanese) :*

石珠

*Description in "Serie1" :*

Vrucht van aardewerk, 2 stuks rijpe druiven



*Reg. No. 3 (Nat. Mus. Eth.) :*

1009839

*Reg. No. 1 (Serrurier IV) :*

*Reg. No. 2 (Serie 1) :*

1-2809

*Descripton on the label :*

タンバ\*ヲギタニイシ、wetsteen

*Present description (English) :*

whetstone from Tanba District

*Present description (Japanese) :*

砥石、丹波の扇谷 (?) の青砥石

*Description in "Serie1" :*

Slijpsteen van gele kleur



*Reg. No. 3 (Nat. Mus. Eth.) :*

1006165

*Reg. No. 1 (Serrurier IV) :*

*Reg. No. 2 (Serie 1) :*

1-2810

*Descripton on the label :*

wetsteen, shale

*Present description (English) :*

whetstone

*Present description (Japanese) :*

砥石

*Description in "Serie1" :*

Slijpsteen van gele kleur



*Reg. No. 3 (Nat. Mus. Eth.) :*

1013186

*Reg. No. 1 (Serrurier IV) :*

*Reg. No. 2 (Serie 1) :*

1-2811

*Descripton on the label :*

slijpsteen、 shale

*Present description (English) :*

whetstone

*Present description (Japanese) :*

砥石

*Description in "Serie1" :*

Slijpsteen van gele kleur



*Reg. No. 3 (Nat. Mus. Eth.) :*

1013187

*Reg. No. 1 (Serrurier IV) :*

*Reg. No. 2 (Serie 1) :*

1-2950

*Descripton on the label :*

*Present description (English) :*

indigo according to "Serie 1" ?  
A kind of incense

*Present description (Japanese) :*

香 (Serie 1 では Indigo とある)

*Description in "Serie1" :*

Doosje met kegelvormige blokjes  
indigo



*Reg. No. 3 (Nat. Mus. Eth.) :*

1000617

*Reg. No. 1 (Serrurier IV) :*

*Reg. No. 2 (Serie 1) :*  
1-2969

*Descripton on the label :*



*Present description (English) :*  
slate for inkstone

*Present description (Japanese) :*  
粘板岩、硯用

*Description in "Serie1" :*  
Twee stukjes schuursteen (blauw)

*Reg. No. 3 (Nat. Mus. Eth.) :*  
1011630

*Reg. No. 1 (Serrurier IV) :*

*Reg. No. 2 (Serie 1) :*  
1-2970

*Descripton on the label :*



*Present description (English) :*  
limestone

*Present description (Japanese) :*  
石灰岩

*Description in "Serie1" :*  
Stukje schuursteen (geel)

*Reg. No. 3 (Nat. Mus. Eth.) :*  
1011632

*Reg. No. 1 (Serrurier IV) :*

*Reg. No. 2 (Serie 1) :*  
1-2971

*Descripton on the label :*



*Present description (English) :*  
charcoal

*Present description (Japanese) :*  
木炭

*Description in "Serie1" :*  
Drie stukjes houstkool

*Reg. No. 3 (Nat. Mus. Eth.) :*  
1011629

*Reg. No. 1 (Serrurier IV) :*

*Reg. No. 2 (Serie 1) :*  
1-3003

*Descripton on the label :*  
pijpaarde



*Present description (English) :*  
pumice

*Present description (Japanese) :*  
軽石、粘土

*Description in "Serie1" :*  
Stuk pijpaarde

*Reg. No. 3 (Nat. Mus. Eth.) :*  
1011604



*Reg. No. 1 (Serrurier IV) :*

*Reg. No. 2 (Serie 1) :*

1-3035

*Descripton on the label :*



*Present description (English) :*  
wall material

*Present description (Japanese) :*  
土壁

*Description in "Serie1" :*  
Houten bakje met bijschrift

*Reg. No. 3 (Nat. Mus. Eth.) :*

1000178

*Reg. No. 1 (Serrurier IV) :*

*Reg. No. 2 (Serie 1) :*

1-3039

*Descripton on the label :*

Aus der Erde braune Topfer  
arbeiten verfertigt

*Present description (English) :*  
clay for pottery、china clay

*Present description (Japanese) :*  
陶土

*Description in "Serie1" :*  
Drie ronde koekjes klei



*Reg. No. 3 (Nat. Mus. Eth.) :*

1013985

*Reg. No. 1 (Serrurier IV) :*

*Reg. No. 2 (Serie 1) :*

1-3042

*Descripton on the label :*



*Present description (English) :*

lacquer, Rhus verniciflua Stokes

*Present description (Japanese) :*

漆

*Description in "Serie1" :*

Twee spanen bakjes

*Reg. No. 3 (Nat. Mus. Eth.) :*

1011623

*Reg. No. 1 (Serrurier IV) :*

*Reg. No. 2 (Serie 1) :*

1-3043

*Descripton on the label :*

子リセイシツ



*Present description (English) :*

Neriseishitsu, kneaded lacquer,  
Rhus verniciflua Stokes

*Present description (Japanese) :*

「練製漆」 ?

*Description in "Serie1" :*

Drie bakjes als No. 3042

*Reg. No. 3 (Nat. Mus. Eth.) :*

1011624

*Reg. No. 1 (Serrurier IV) :*

*Reg. No. 2 (Serie 1) :*  
1-3044

*Descripton on the label :*



*Present description (English) :*  
lacquer, Rhus verniciflua Stokes

*Present description (Japanese) :*  
漆

*Description in "Serie1" :*  
Drie bakjes als No. 3042

*Reg. No. 3 (Nat. Mus. Eth.) :*  
1011625

---

*Reg. No. 1 (Serrurier IV) :*

*Reg. No. 2 (Serie 1) :*  
1-3061

*Descripton on the label :*



*Present description (English) :*  
brick

*Present description (Japanese) :*  
レンガ

*Description in "Serie1" :*  
Onregelmatig vierkant stuk  
roodachtige kleiaarde

*Reg. No. 3 (Nat. Mus. Eth.) :*  
1011626

*Reg. No. 1 (Serrurier IV) :*

*Reg. No. 2 (Serie 1) :*

1-3066

*Descripton on the label :*

cocon

*Present description (English) :*

cocoon, cf. 1-3057, 1011447

*Present description (Japanese) :*

蚕繭、桑の葉、

*Description in "Serie1" :*

Twee cocons van de wilde zijderups (?)



*Reg. No. 3 (Nat. Mus. Eth.) :*

1011625

*Reg. No. 1 (Serrurier IV) :*

*Reg. No. 2 (Serie 1) :*

1-4520

*Descripton on the label :*

*Present description (English) :*

fragment of pottery

*Present description (Japanese) :*

陶片

*Description in "Serie1" :*



*Reg. No. 3 (Nat. Mus. Eth.) :*

1025742

*Reg. No. 1 (Serrurier IV) :*

*Reg. No. 2 (Serie 1) :*  
1-4531

*Description on the label :*  
vuistbijl

*Present description (English) :*  
stone-axe

*Present description (Japanese) :*  
石斧

*Description in "Serie1" :*



*Reg. No. 3 (Nat. Mus. Eth.) :*  
1025751

*Reg. No. 1 (Serrurier IV) :*

*Reg. No. 2 (Serie 1) :*  
1-4532

*Description on the label :*  
vuistbijl

*Present description (English) :*  
stone-axe

*Present description (Japanese) :*  
石斧

*Description in "Serie1" :*



*Reg. No. 3 (Nat. Mus. Eth.) :*  
1015836

*Reg. No. 1 (Serrurier IV) :*

*Reg. No. 2 (Serie 1) :*

1-4534

*Descripton on the label :*

beitel

*Present description (English) :*

stone-chisel made of chert

*Present description (Japanese) :*

石タガネ

*Description in "Serie1" :*



*Reg. No. 3 (Nat. Mus. Eth.) :*

1025753

*Reg. No. 1 (Serrurier IV) :*

*Reg. No. 2 (Serie 1) :*

1-4535

*Descripton on the label :*

snijwerktuig

*Present description (English) :*

stone-knife made of chert

*Present description (Japanese) :*

石包丁

*Description in "Serie1" :*



*Reg. No. 3 (Nat. Mus. Eth.) :*

1025754

*Reg. No. 1 (Serrurier IV) :*

*Reg. No. 2 (Serie 1) :*  
1-4539

*Description on the label :*  
snijwerktuig, chert

*Present description (English) :*  
stone-knife made of chert

*Present description (Japanese) :*  
石包丁

*Description in "Serie1" :*



*Reg. No. 3 (Nat. Mus. Eth.) :*  
1015838

*Reg. No. 1 (Serrurier IV) :*

*Reg. No. 2 (Serie 1) :*  
1-4540

*Description on the label :*

*Present description (English) :*  
stone- blade made of agate

*Present description (Japanese) :*  
石刀

*Description in "Serie1" :*



*Reg. No. 3 (Nat. Mus. Eth.) :*  
1025757

*Reg. No. 1 (Serrurier IV) :*

*Reg. No. 2 (Serie 1) :*

1-4572dub

*Descripton on the label :*

bijl

*Present description (English) :*

stone-axe

*Present description (Japanese) :*

石斧

*Description in "Serie1" :*



*Reg. No. 3 (Nat. Mus. Eth.) :*

2106554

*Reg. No. 1 (Serrurier IV) :*

*Reg. No. 2 (Serie 1) :*

1-4688

*Descripton on the label :*

vuistbijl

*Present description (English) :*

stone-axe

*Present description (Japanese) :*

石斧

*Description in "Serie1" :*



*Reg. No. 3 (Nat. Mus. Eth.) :*

1025795





*Reg. No. 1 (Serrurier IV) :*

*Reg. No. 2 (Serie 1) :*

1-720

*Descripton on the label :*

*Present description (English) :*

Sake, rice wine

*Present description (Japanese) :*

酒

*Description in "Serie1" :*

Flesch met sake of  
rijstbrandewijn

*Reg. No. 3 (Nat. Mus. Eth.) :*

1011778



*Reg. No. 1 (Serrurier IV) :*

*Reg. No. 2 (Serie 1) :*

1-800

*Descripton on the label :*

*Present description (English) :*

A kind of edible mushroom

*Present description (Japanese) :*

茸 (?)

*Description in "Serie1" :*

Flesch met gedroogde eetbare  
champignons

*Reg. No. 3 (Nat. Mus. Eth.) :*

1011758



*Reg. No. 1 (Serrurier IV) :*

*Reg. No. 2 (Serie 1) :*

1-801

*Descripton on the label :*

soja boon

*Present description (English) :*

Shoyu, Soy sauce

*Present description (Japanese) :*

醤油

*Description in "Serie1" :*

Flesch met soja (uit sojaboonen,  
zout en rijstemout bereid)

*Reg. No. 3 (Nat. Mus. Eth.) :*

1011775



*Reg. No. 1 (Serrurier IV) :*

*Reg. No. 2 (Serie 1) :*

1-804

*Descripton on the label :*

*Present description (English) :*

Kanten, agar

*Present description (Japanese) :*

寒天

*Description in "Serie1" :*

Flesch met zeewier, zie No. 803,  
gekleurd met plantensappen

*Reg. No. 3 (Nat. Mus. Eth.) :*

1011780



*Reg. No. 1 (Serrurier IV) :*

*Reg. No. 2 (Serie 1) :*

1-898bis

*Descripton on the label :*

*Present description (English) :*

Seeds of "Quisqualis indica L."

*Present description (Japanese) :*

シクンシの実

*Description in "Serie1" :*

Flesch met opschrift "si kun si"  
d.i. zaad van quisqualis simensis  
Lindl.

*Reg. No. 3 (Nat. Mus. Eth.) :*

114522



*Reg. No. 1 (Serrurier IV) :*

*Reg. No. 2 (Serie 1) :*

182-28

*Descripton on the label :*

*Present description (English) :*

Hōryū, trade names of chinese  
drugs, see 1011452(1-3686) and  
1011473(1-3685)

*Present description (Japanese) :*

抱龍、漢方薬 1011452(1-3686),  
1011473(1-3685) を参照

*Description in "Serie1" :*

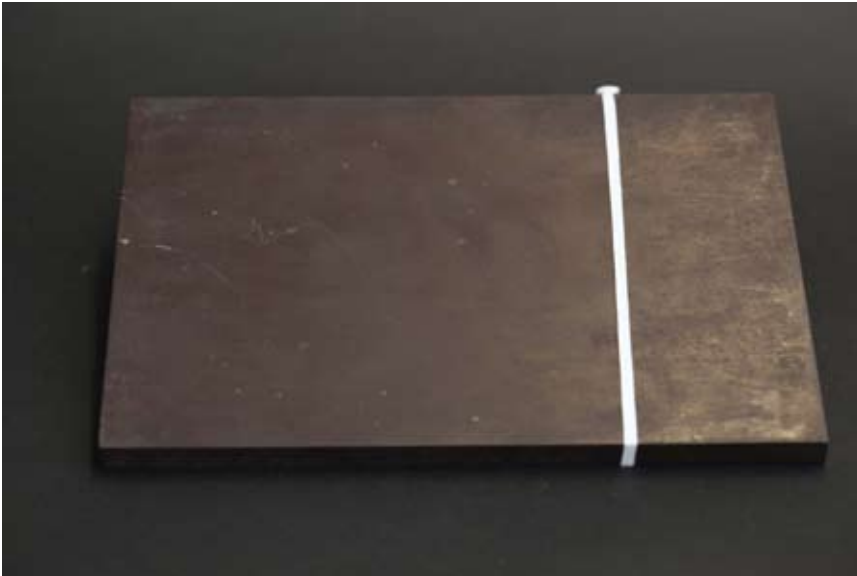
*Reg. No. 3 (Nat. Mus. Eth.) :*

1011930

*Reg. No. 1 (Serrurier IV) :*

*Reg. No. 2 (Serie 1) :*  
360-2282

*Descripton on the label :*  
lei



*Present description (English) :*  
stone slate

*Present description (Japanese) :*  
石板

*Description in "Serie1" :*

*Reg. No. 3 (Nat. Mus. Eth.) :*  
1000610

*Reg. No. 1 (Serrurier IV) :*

*Reg. No. 2 (Serie 1) :*  
360-468

*Descripton on the label :*  
catjon



*Present description (English) :*  
limonite

*Present description (Japanese) :*  
褐鉄鉱

*Description in "Serie1" :*

*Reg. No. 3 (Nat. Mus. Eth.) :*  
1011634



*Reg. No. 1 (Serrurier IV) :*

*Reg. No. 2 (Serie 1) :*  
360-4968

*Descripton on the label :*

*Present description (English) :*  
shark skin

*Present description (Japanese) :*  
サメの皮

*Description in "Serie1" :*

*Reg. No. 3 (Nat. Mus. Eth.) :*  
1006245

---

*Reg. No. 1 (Serrurier IV) :*

*Reg. No. 2 (Serie 1) :*  
360-6083

*Descripton on the label :*



*Present description (English) :*  
sphere of brass for Buddhist altar fittings

*Present description (Japanese) :*  
真鍮球、仏具？

*Description in "Serie1" :*

*Reg. No. 3 (Nat. Mus. Eth.) :*  
1006458

*Reg. No. 1 (Serrurier IV) :*

*Reg. No. 2 (Serie 1) :*  
360-7201

*Descripton on the label :*  
merg

*Present description (English) :*  
marrow of palm tree

*Present description (Japanese) :*  
ヤシの髓

*Description in "Serie1" :*



*Reg. No. 3 (Nat. Mus. Eth.) :*  
1000179

*Reg. No. 1 (Serrurier IV) :*

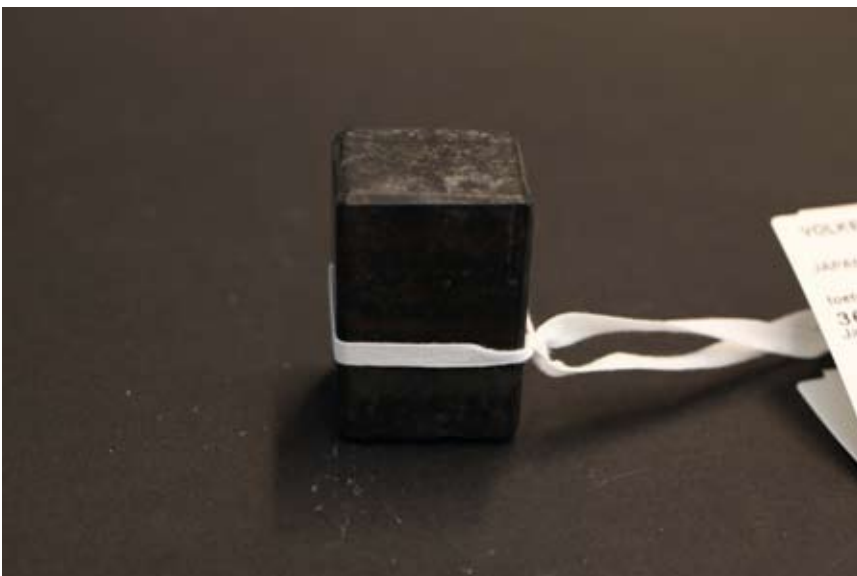
*Reg. No. 2 (Serie 1) :*  
360-7884

*Descripton on the label :*  
toetssteen

*Present description (English) :*  
stone sample

*Present description (Japanese) :*  
石材見本

*Description in "Serie1" :*



*Reg. No. 3 (Nat. Mus. Eth.) :*  
1011627



*Reg. No. 1 (Serrurier IV) :*

*Reg. No. 2 (Serie 1) :*  
529-40

*Description on the label :*  
palmmerg

*Present description (English) :*  
marrow of palm tree, from  
Taiwan

*Present description (Japanese) :*  
ヤシの髓、台湾

*Description in "Serie1" :*

*Reg. No. 3 (Nat. Mus. Eth.) :*  
2004301



*Reg. No. 1 (Serrurier IV) :*

*Reg. No. 2 (Serie 1) :*  
529-48

*Description on the label :*

*Present description (English) :*  
coal from Taiwan

*Present description (Japanese) :*  
石炭、台湾、kolung delfstof

*Description in "Serie1" :*

*Reg. No. 3 (Nat. Mus. Eth.) :*  
2004309